

Design it right for quality on site

Will South



Etude

cocreate



The Performance___Gap

“In use energy can be 5-10 times higher than calculations at design.” (Zero Carbon Hub)

Yes, some is due to bad assumptions

Yes, some is due to those dratted ‘users’

But lots is due to poor construction quality

GAPS



“ Poor construction is the designer’s fault ”

(an inflammatory comment)





How can we help?

Choice of materials

Thinking through how it's built

Checking it meets expectations early



Thick insulation board is flat and stiff







Thick insulation board is difficult to cut

(in a straight line)








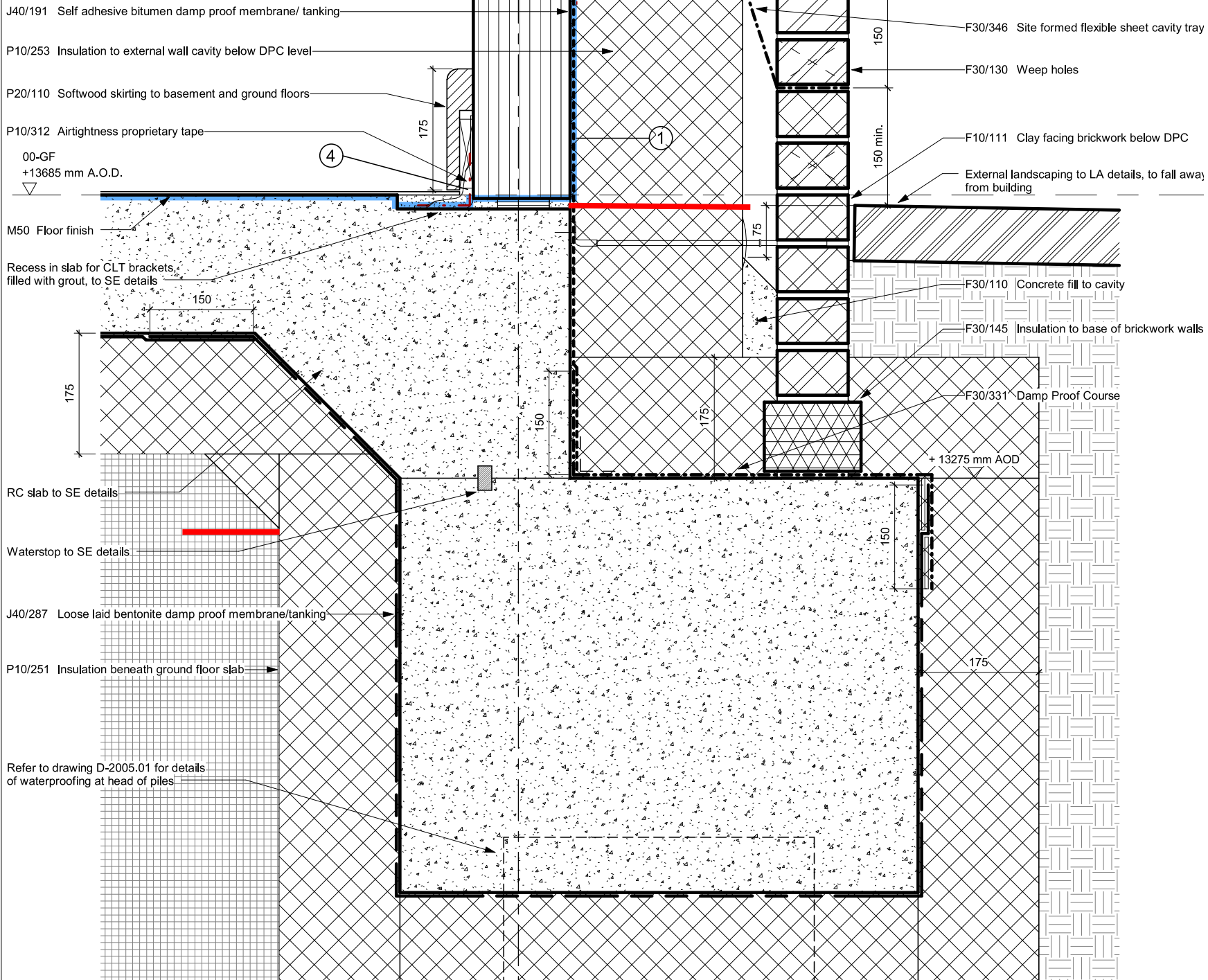
sally godber
@SallyGodber



A close-up photograph of a wooden cabinet drawer. The drawer is made of light-colored wood and features a dark wood knob on the left side. The front edge of the drawer is finished with a series of dovetail joints, which are visible as dark, V-shaped notches. The text "craft = time = cost" is overlaid on the right side of the image.

craft = time = cost





J40/191 Self adhesive bitumen damp proof membrane/ tanking

P10/253 Insulation to external wall cavity below DPC level

P20/110 Softwood skirting to basement and ground floors

P10/312 Airtightness proprietary tape

00-GF
+13685 mm A.O.D.

M50 Floor finish

Recess in slab for CLT brackets,
filled with grout, to SE details

RC slab to SE details

Waterstop to SE details

J40/287 Loose laid bentonite damp proof membrane/tanking

P10/251 Insulation beneath ground floor slab

Refer to drawing D-2005.01 for details
of waterproofing at head of piles

F30/346 Site formed flexible sheet cavity tray

F30/130 Weep holes

F10/111 Clay facing brickwork below DPC

External landscaping to LA details, to fall away
from building

F30/110 Concrete fill to cavity

F30/145 Insulation to base of brickwork walls

F30/331 Damp Proof Course

+13275 mm AOD

4

1

150

150 min.

75

175

150

150

175

150

175

‘Straight’ is harder for wet trades



T-VIND SUPER

T-VIND SUPER

8









Set expectations early

What does 'good' look like?



Thank you



Etude

cocreate