

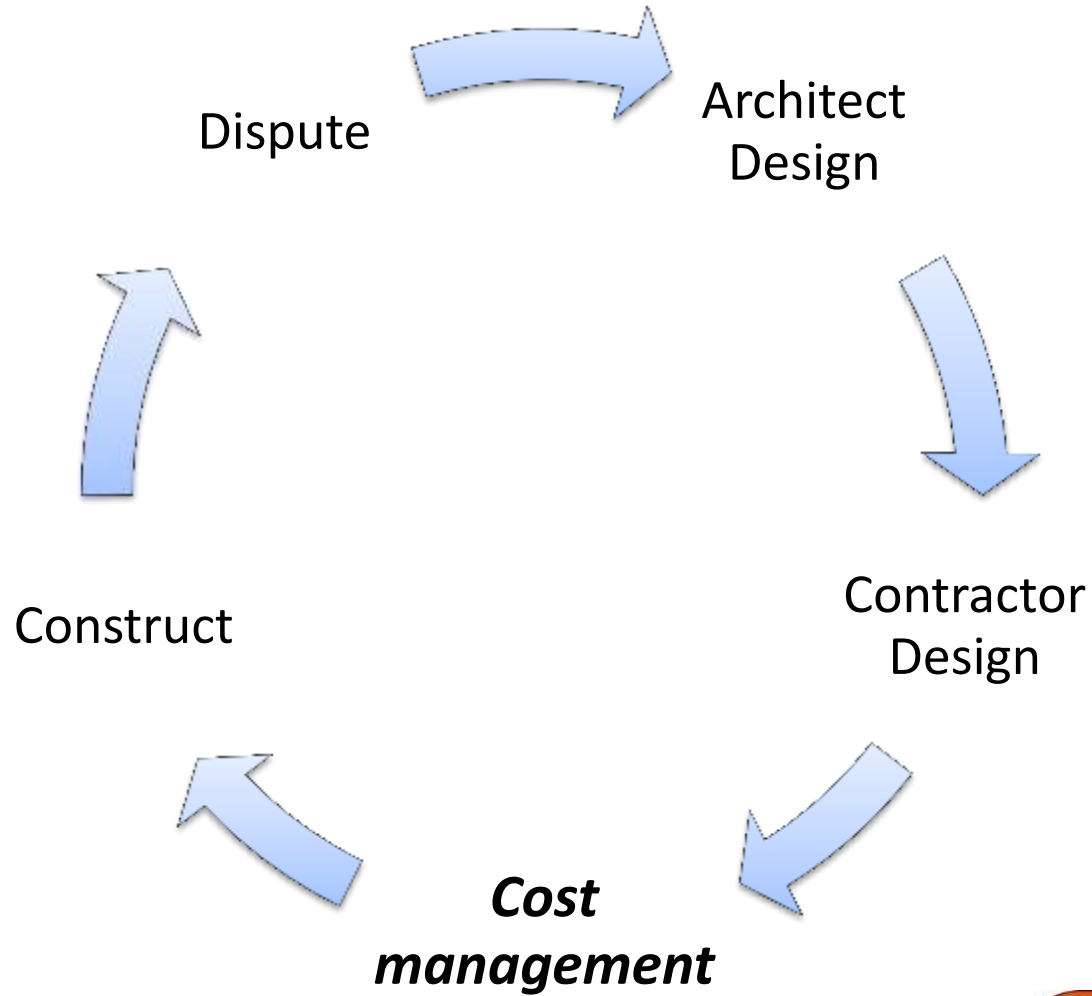


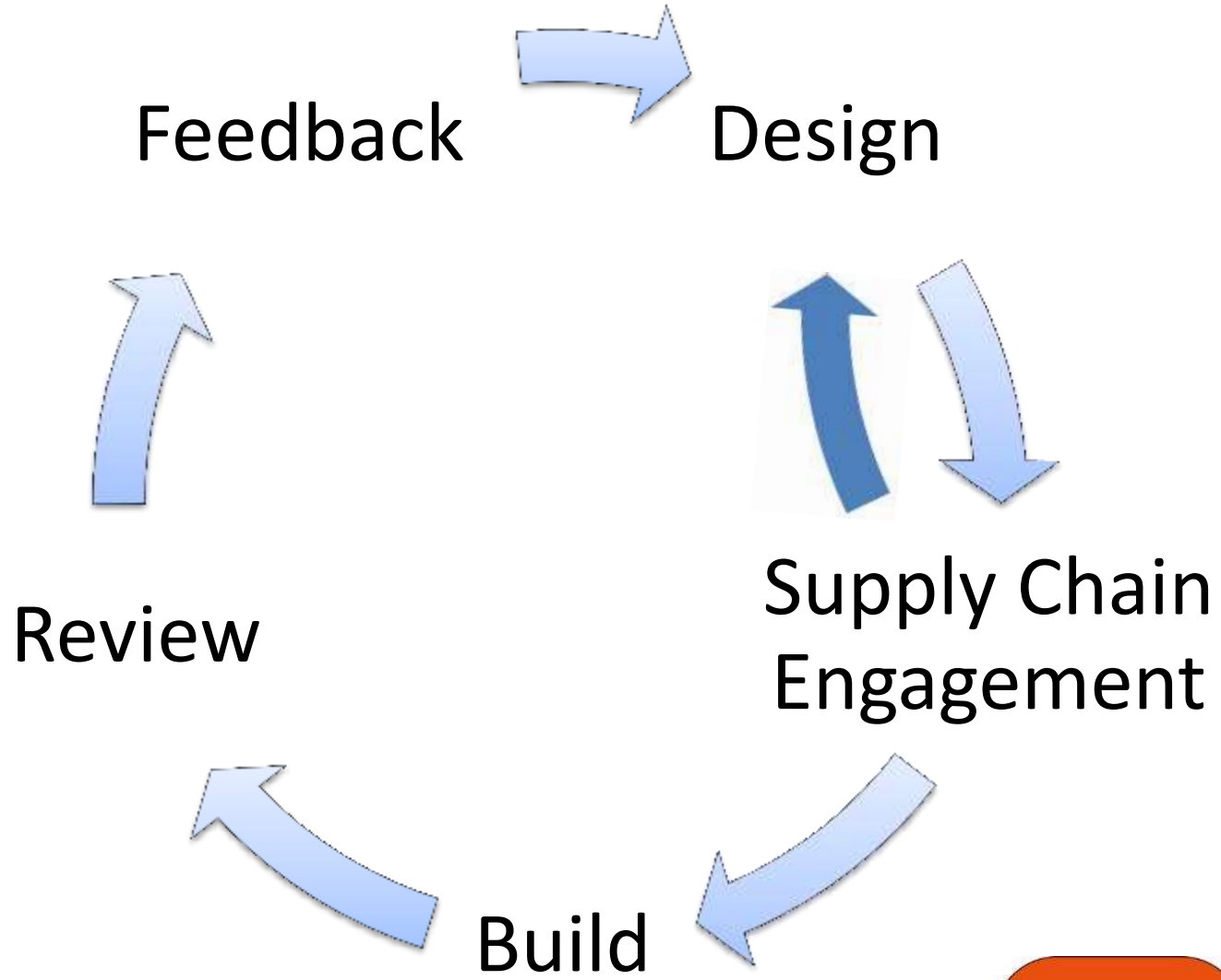
Matt Wisdom
Delivering Quality on Site



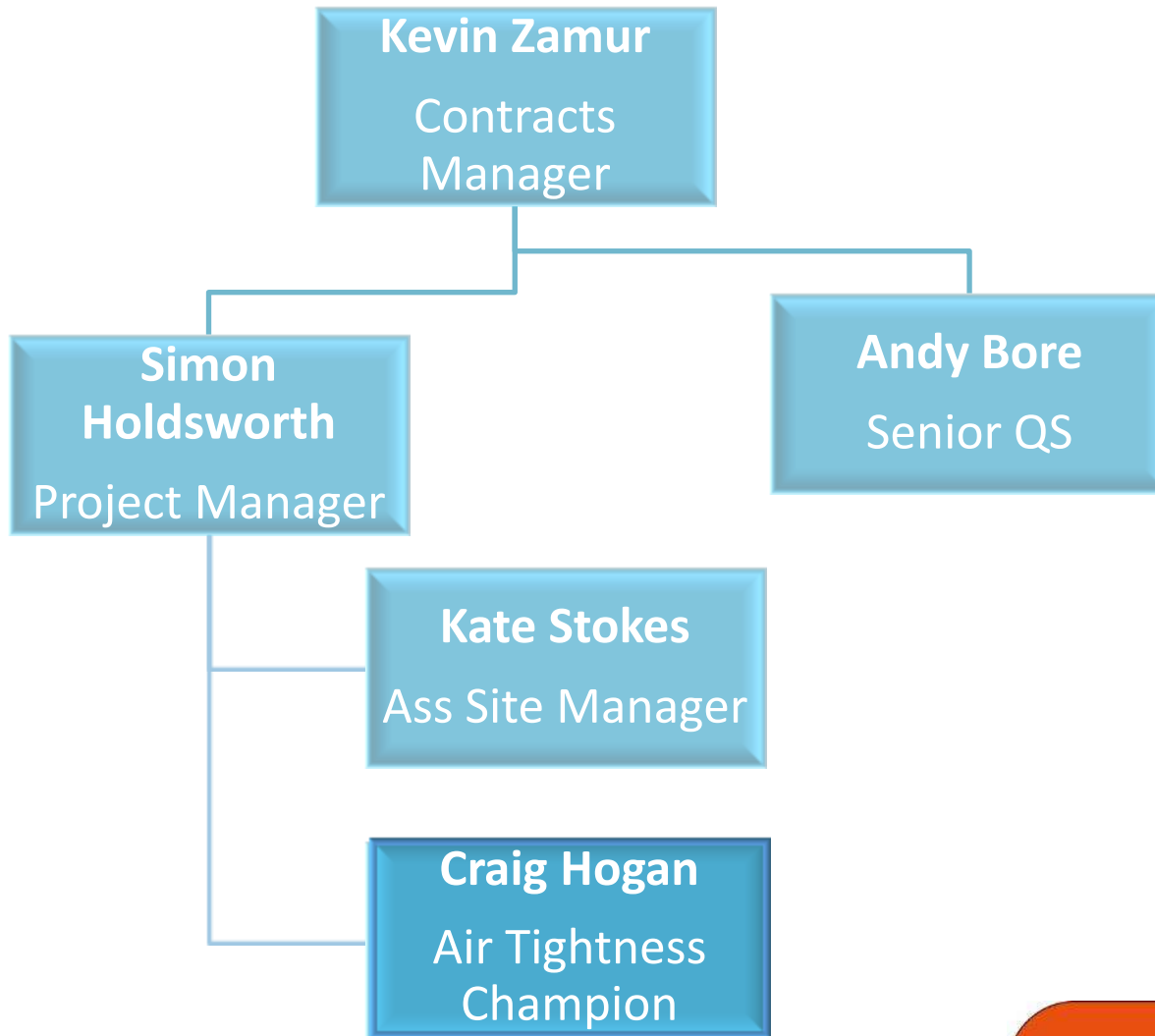
ARCHITYPE

Delivering Quality on Site





Wilkinson Primary School



- Good partnered relationships
- Long term engagement
- Collaborative
- Regular Feedback



Design review workshops

- Prior to start
- On Site
- Detailing & Buildability
- Innovation



On site



THOMAS VALE CONSTRUCTION
SITE INDUCTION

REVISED MAY 2012



THOMAS VALE QUALITY SITE INDUCTION



QUALITY INDUCTION

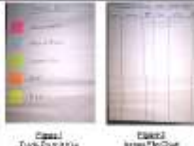


- **OUR CLIENTS DEMAND GOOD QUALITY DEFECT FREE BUILDINGS**
- **WE HAVE A COMPREHENSIVE QUALITY MANAGEMENT SYSTEM ACCREDITED TO ISO 9001**
- **YOUR COMPLIANCE WITH THIS SYSTEM IS MANDATORY**
- **WE CANNOT AND WILL NOT ACCEPT POOR QUALITY**
- **OUR VISITING GROUP QUALITY MANAGER AUDITS ALL SITES**

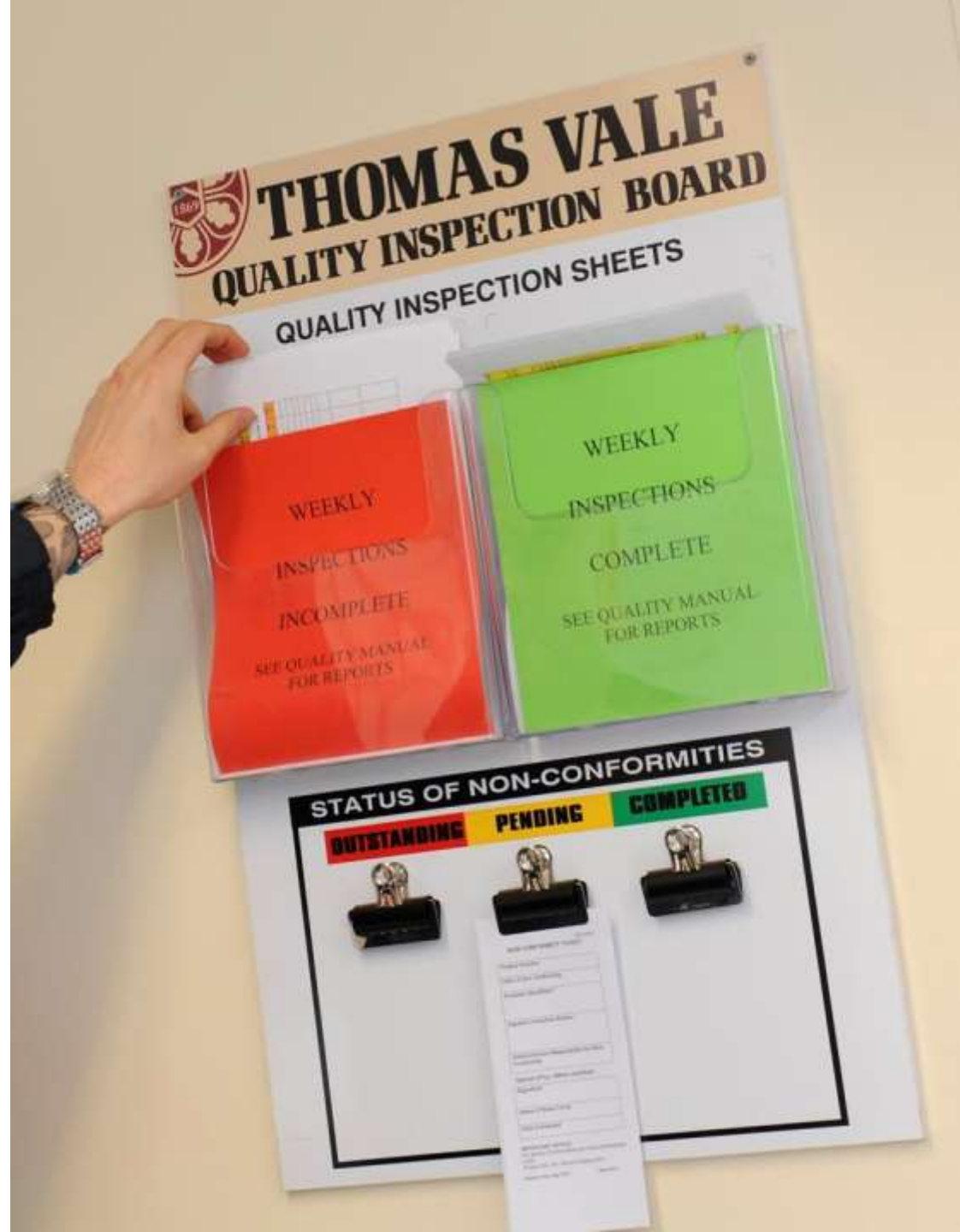


Collaborative planning process

Identifying follow on contractors, issues etc

Reduce waste – time, cost, materials

Running a Collaborative Planning Workshop					
Phase	Time Taking (min)	Activity	Who	Key points	Comments / Support Materials / Visual
Pre-workshop Start		<ul style="list-style-type: none"> Prepare Trade Pack & key Prepare Issues Flip Chart Print Master Planning sheets 	<ul style="list-style-type: none"> Facilitator Facilitator Facilitator + Others as available 	<ul style="list-style-type: none"> See Figure 1 See Figure 2 	
Introduction to the Workshop		<ul style="list-style-type: none"> Introductory comments & welcome Introduction to Collaborative Planning Set objectives for the workshop 	<ul style="list-style-type: none"> Contractor / Project Mgr. Facilitator All 	<ul style="list-style-type: none"> Underline importance of the project, project time target, value, site-site instructions, etc. Thomas Vale's supply chain strategy - work much more collaboratively with a smaller set of key strategic Supply Chain Partners A key ambition is the use of Collaborative Planning Aim to work together, using each other's expertise to create the best workshop program May aim to fix certain certainty of delivery to the defined target completion time Often, the approach can result in delivering ahead of scheduled completion date Outline the targets for the project and therefore the objectives for the process being planned 	Standard Introductory Presentation
		<ul style="list-style-type: none"> Introduce the job & agree the 'best' way to carry out the construction Trades defining duration times for each phase of work Developing the Master Plan 	<ul style="list-style-type: none"> Talk through Contract / Project Mgr. to contribute Trades All 	<ul style="list-style-type: none"> Talk through initial ideas on how the build sequence should be undertaken Considerations for the construction route Site constraints & considerations (e.g. access, materials supply, etc.) Any opportunities for achieving 'better' construction practices? Consider generalising and consistency in off-site builds, etc.) Any ideas for innovation that would speed the overall design? Each trade give a piece of Rods, colour corresponding to the preferred Trade Key (see Figure 1) Trades asked to visualize their work activities, and the each workshop/phase detail the relevant duration times Each trade to complete in 'Start' and 'Finish' Pack 4 for each room/area/phase of work (see Figure 2) Trades challenged to give 'best' times without float - if float is included it needs to be justified Trades encouraged to refer to construction drawings, clarity design & construction queries, etc. As each trade visualises how they would best like to carry-out their work, they should record any issues on a Pack 4, listing a separate Rods for each issue. The issue Rods should be coded on the Issues Flip Chart (see Figure 2) Each trade is sure, starting with the first trade and then going in the agreed logical construction work sequence, position their Rods in the correct time position on the Master Planning sheet Challenge the occurrence of activities listing (which levels it is normal to find people think in terms of weekly time blocks - nothing clearly will last exactly a week) Interaction and consensus of working for preceding and following trades needs to be considered Can other ideas to improve interaction and (where a) activity duration should be encouraged? Aim to complete trades working parallel wherever practical and safe. Phasing of work will help achieve this. The ability to achieve substantial working parallel helps deliver the project more safely. 	 





21/05
KORONA
755 1162
KORONA

Key issues

- Follow On trades
- Responsibility for air tightness
- Engagement on site

Consultant Site support

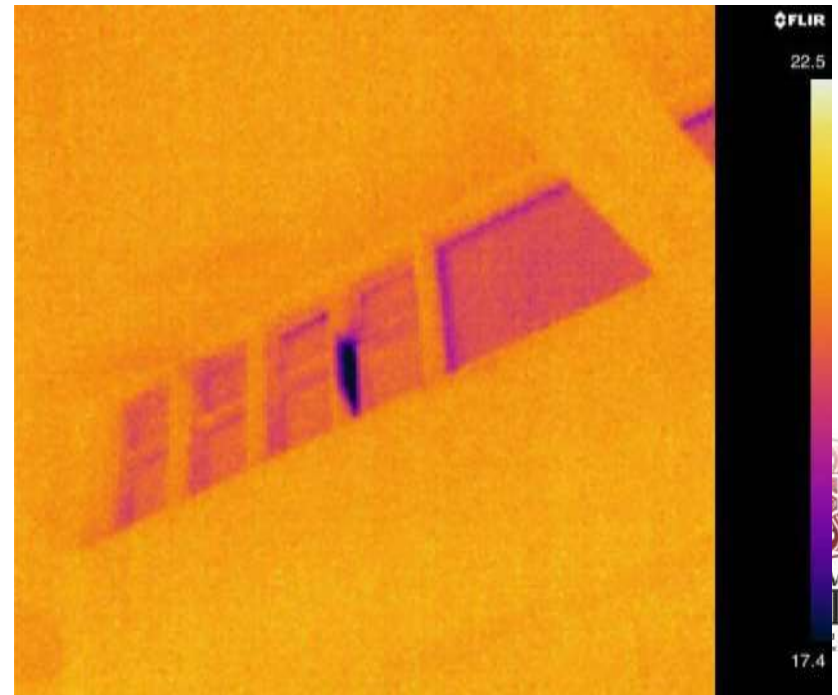
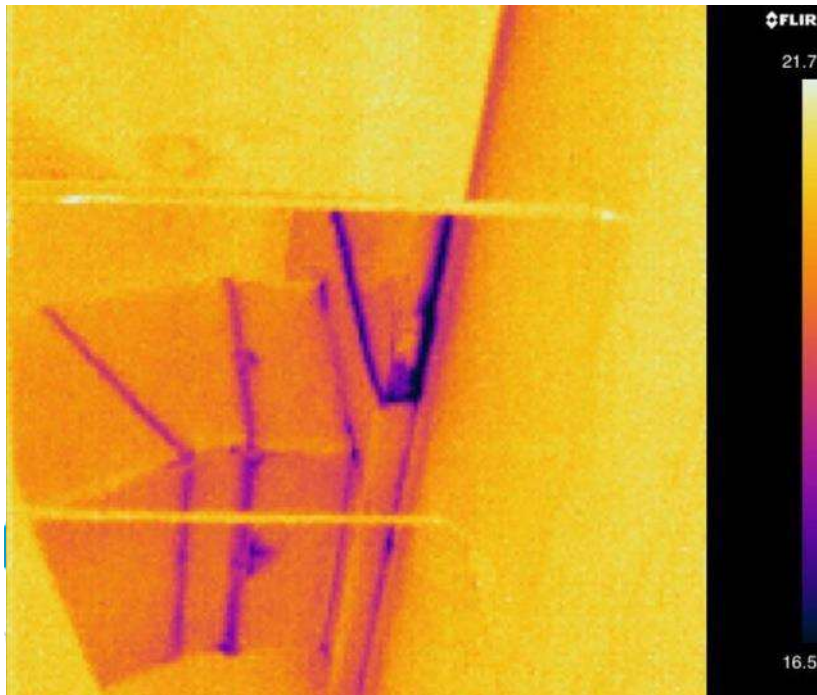
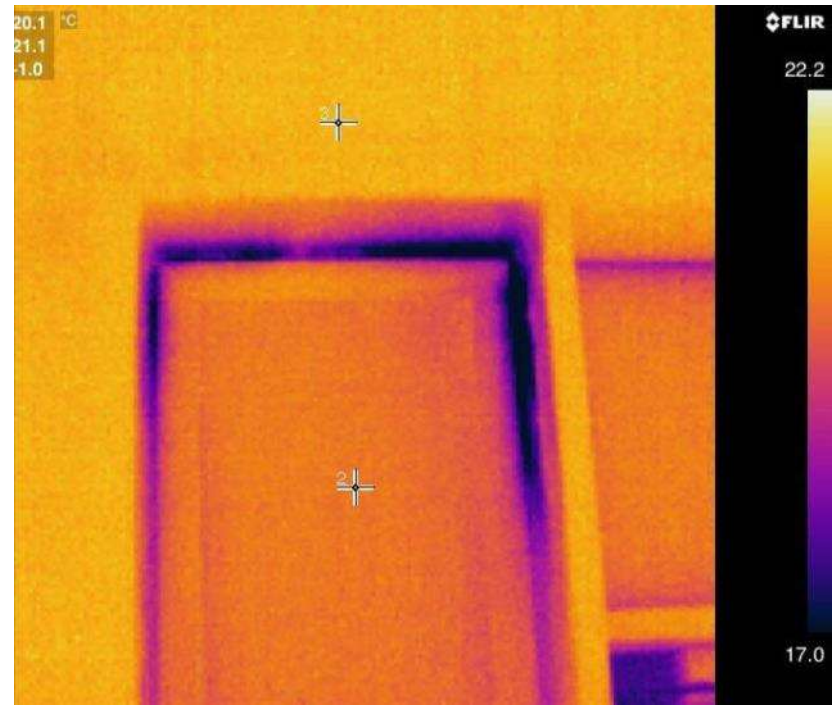
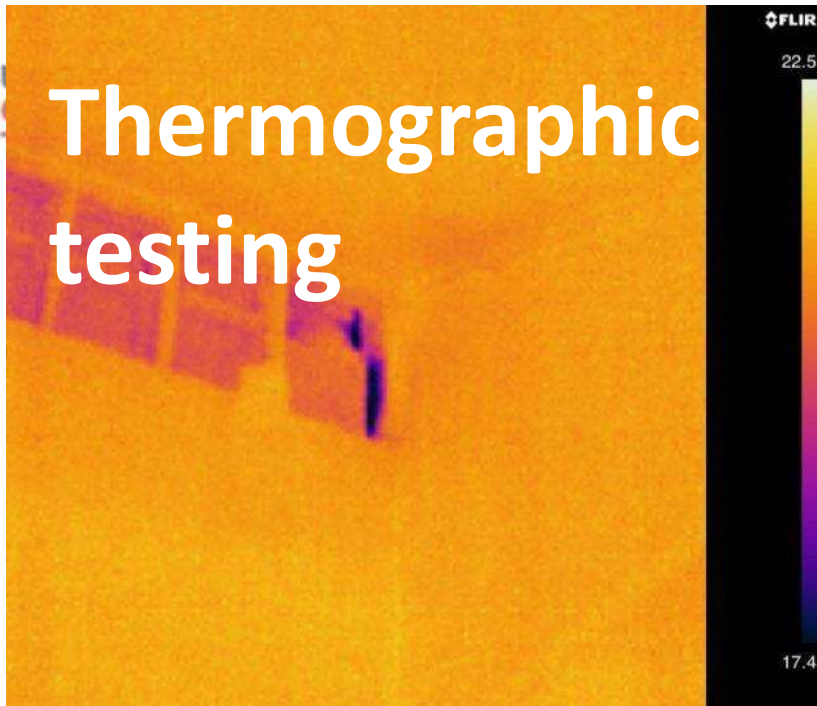
- Specialist workshops
- Consultants on site
- Tool box talks
 - air tightness awareness
- Feedback into design
- Airtightness Champions
- Monitored through QA



- Thermographic
- Smoke
- Air pressure



Thermographic testing



Smoke testing



Conclusion

Engagement

Communication

Review

Thank you.

Matt Wisdom

Thomas Vale Construction – Bouygues UK