

Delivering PassivHaus

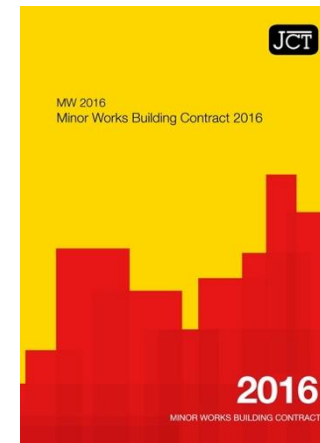
John Palmer
Enhabit Ltd

Outline

- Starting out ... what are we getting in to?
- Selecting the team
- Education, Education, Education
- Monitoring Delivery
- Case Study

Starting out ...

- Motivations vs Benefits
 - Energy
 - Comfort
 - Kudos?
- Client understanding
- Costs ... real costs
 - Time = money
- Contractor understanding
 - Performance Indicators



1. **EnerPHit Criteria.** The project is designed to achieve the following EnerPHit criteria:

a. 2. **Airtightness.** The design airtightness of the project is 0.6 ach @ 50Pa. Achieving this criteria will be dependent on attention to detail as the building fabric elements are refurbished. The Contractor will conduct a minimum of two airtightness tests in order to assess

e. 3. **Fabric Specification.** The detailed fabric specification is set out in Enhabit's Fabric Performance Specification dated 15 Apr 2015. The refurbishment of the building fabric elements will be assessed

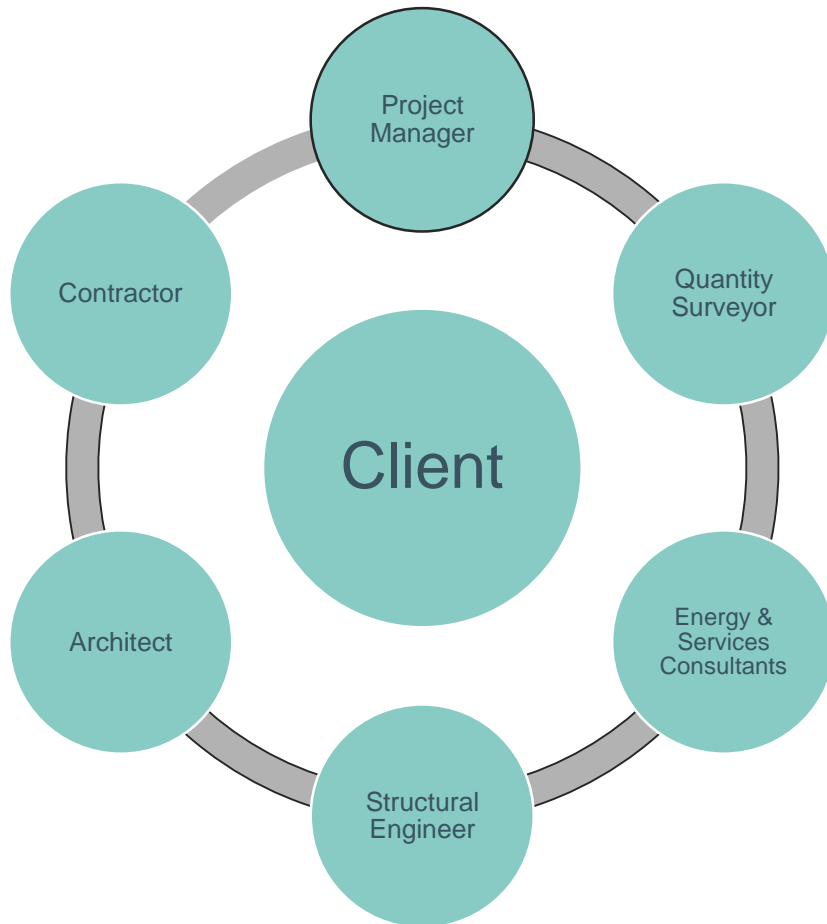
T
t
c
C
4. **Detailing.** Architectural details showing exactly how fabric elements and airtightness layers are to be constructed have been provided to the Contractor. The refurbishment of the building fabric elements will be assessed against these details and the Contractor

will
co
5. **Photographic Records.** The contractor will maintain a photographic record of the project. Electronically dated photographs are to be taken of all areas before, during and after works have taken place. These areas are to include all parts of the fabric and building services which are relevant to meeting the EnerPHit criteria.

Outline

- Starting out ... what are we getting in to?
- Selecting the team
- Education, Education, Education
- Monitoring Delivery
- Case Study

Selecting/Developing the team ...



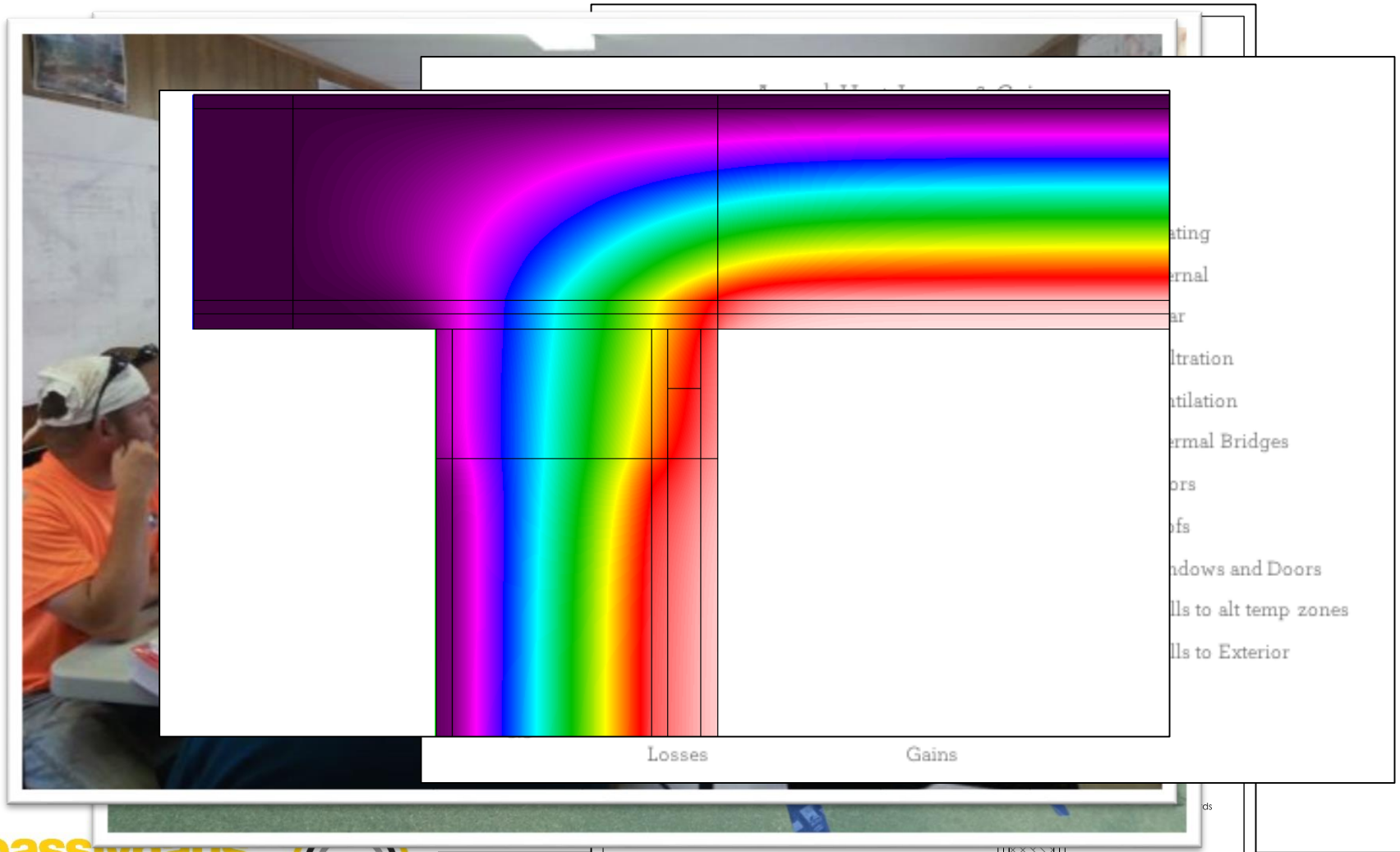
- Why are we doing this?
 - Motivations
- Who is in charge?
- Previous experience
- This job is different
- Fear of the unknown
 - Risk = Cost
- Kudos ...

Outline

- Starting out ... what are we getting in to?
- Selecting the team
- Education, Education, Education
- Monitoring Delivery
- Case Study

Education, Education, Education

-



Outline

- Starting out ... what are we getting in to?
- Selecting the team
- Education, Education, Education
- **Monitoring Delivery**
- **Case Study**

Monitoring Delivery

- Whose job is it?
- Ensure information is available early
- Regular site visits
- Good communication
- Coordination
- Quality control and enforcement ...



Outline

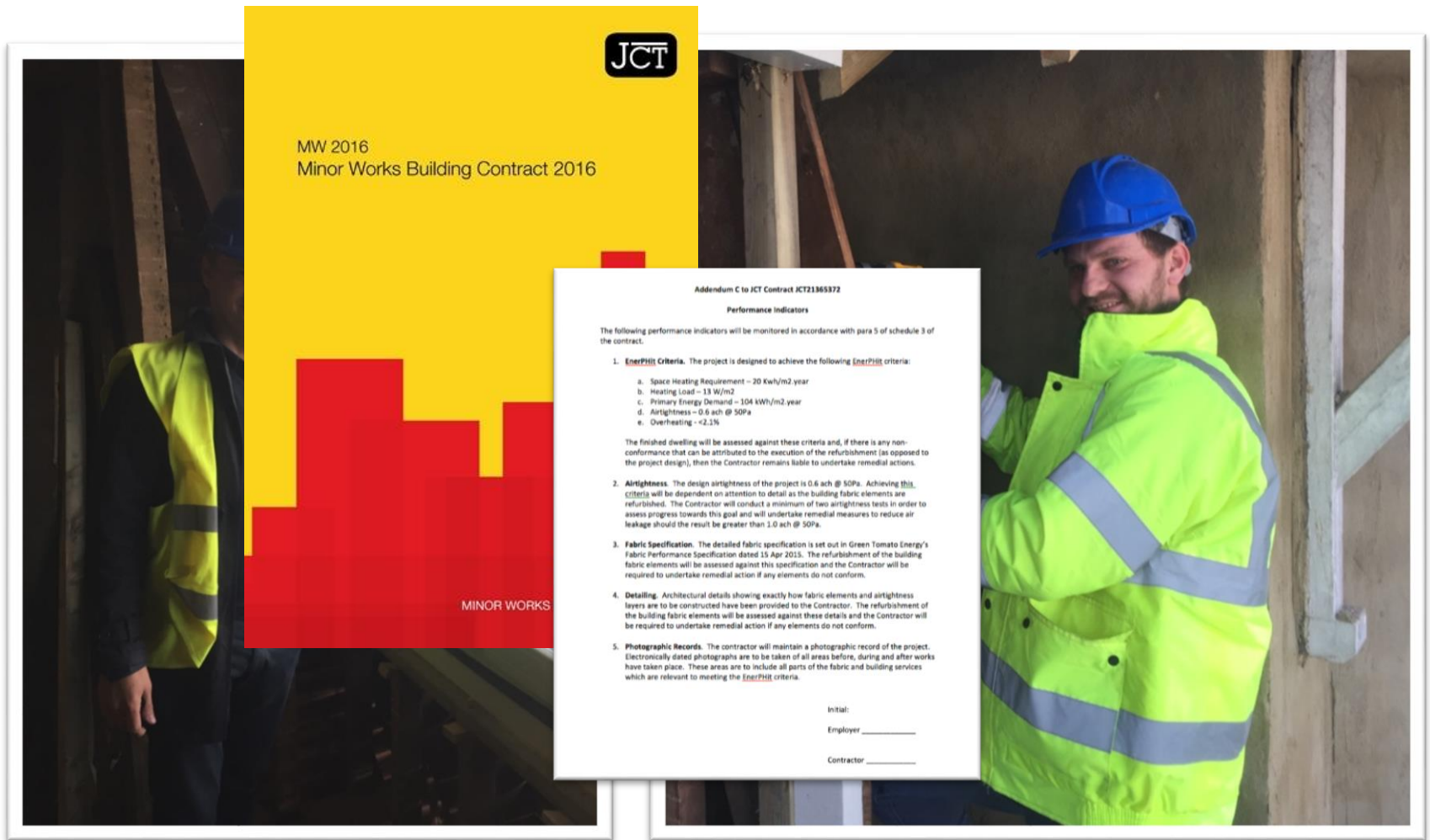
- Starting out ... what are we getting in to?
- Selecting the team
- Education, Education, Education
- Monitoring Delivery
- **Case Study**

Case Study

- North London
- 1900s solid wall semi
- Loft and GF Extension
- Refurb to EnerPHit



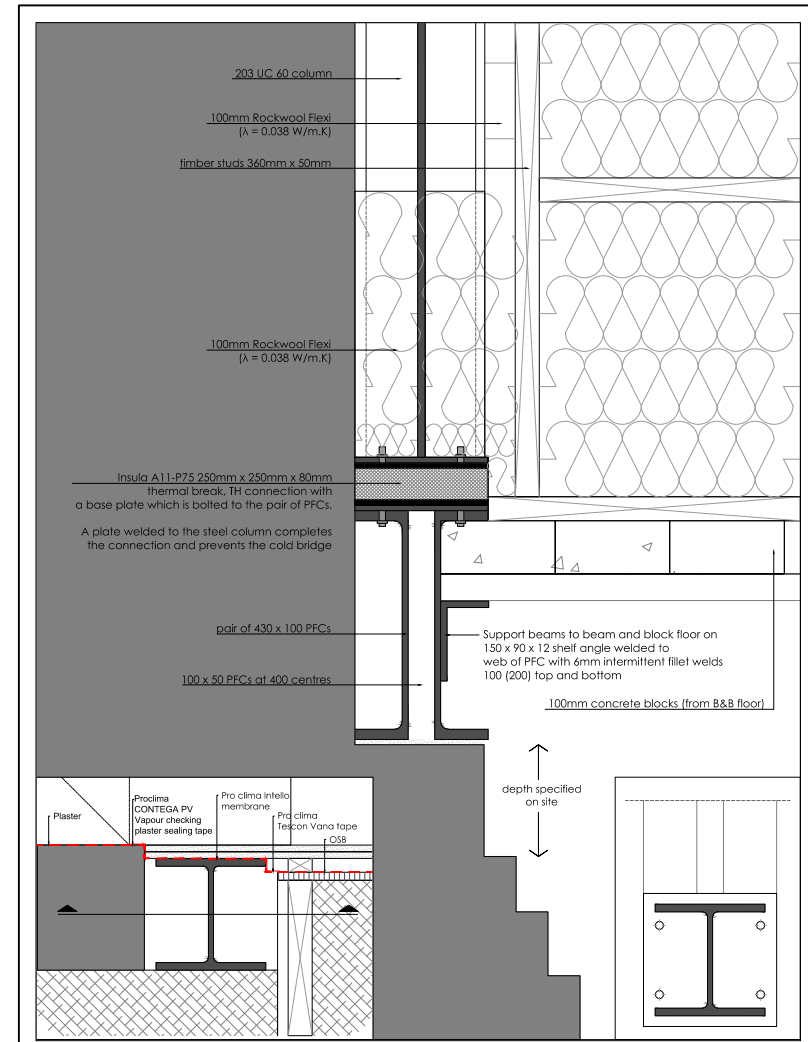
Case Study



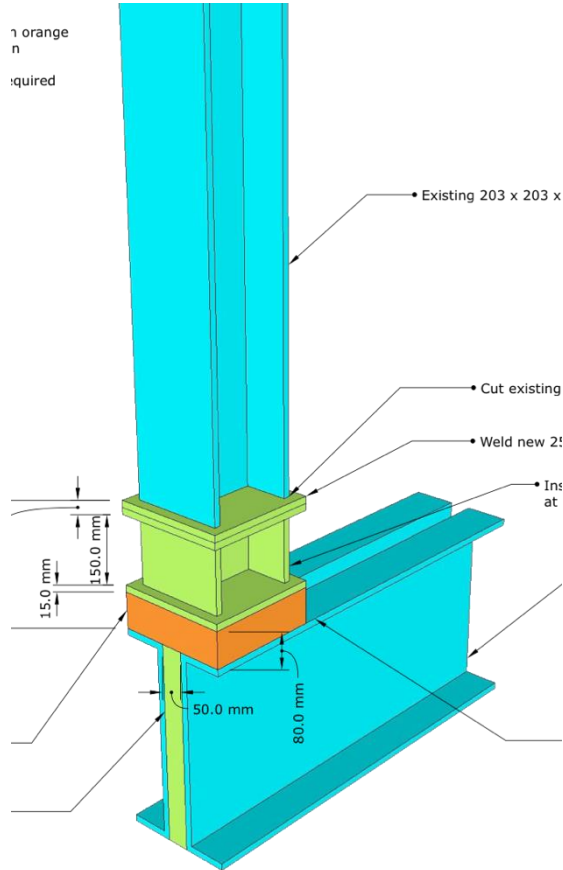
Case Study



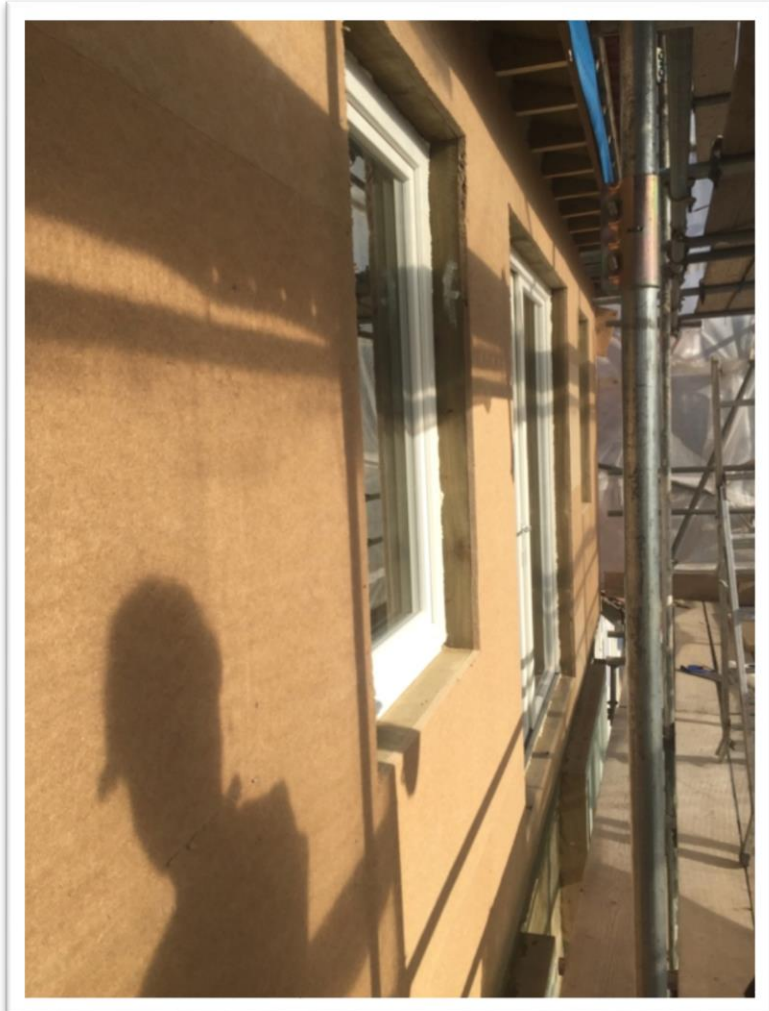
Case Study – quality control



Case Study – quality control



Case Study



Questions?

