

LEAP

Low Energy Architectural Practice

Elemental Solutions

Making the complicated simple

QA as Risk Management (or, how to avoid doing stupid things)

- Architects start off knowing a little about a lot and end up knowing nothing about everything.
- Engineers start off knowing a lot about a little and end up knowing everything about nothing.
- Contractors start off knowing everything about everything and end up knowing nothing about anything, because they work with architects and engineers.



Passivhaus Claims

Clear & easily verifiable

- blower door
- thermography
- PHPP
- components

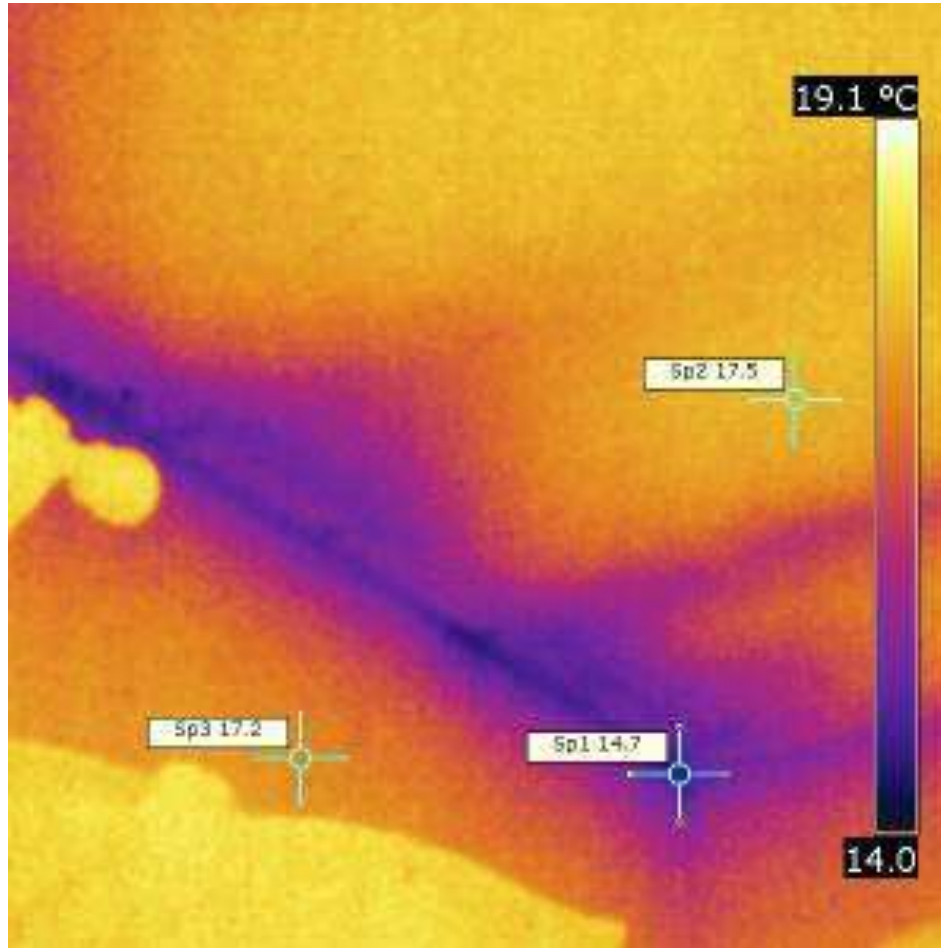
Trades description

- fake goods
- consumer law
- annoys those doing it properly



Claiming The Passivhaus Standard
free download: www.passivhaustrust.org.uk

Performance not box ticking

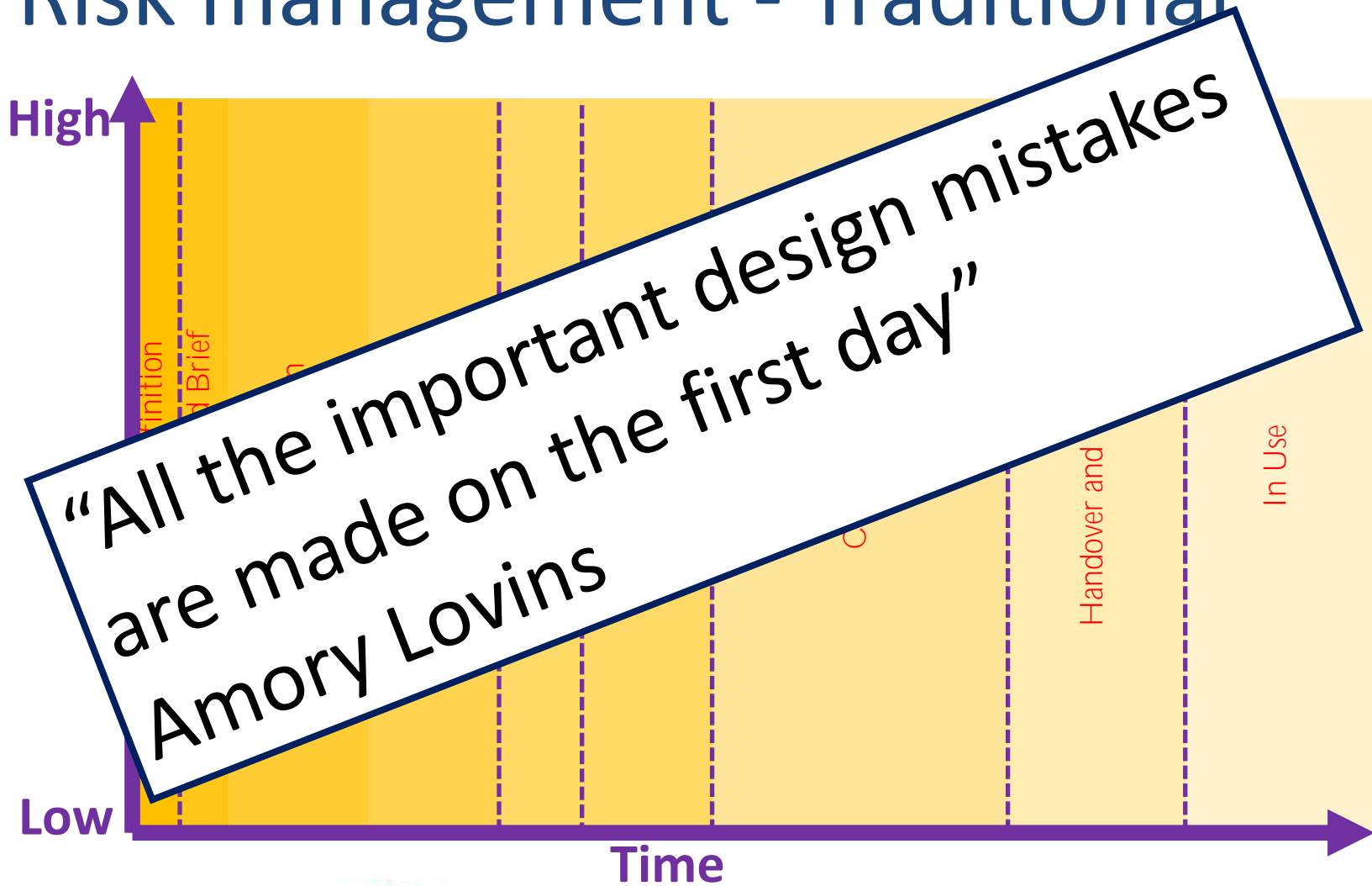


Implementing The Standard

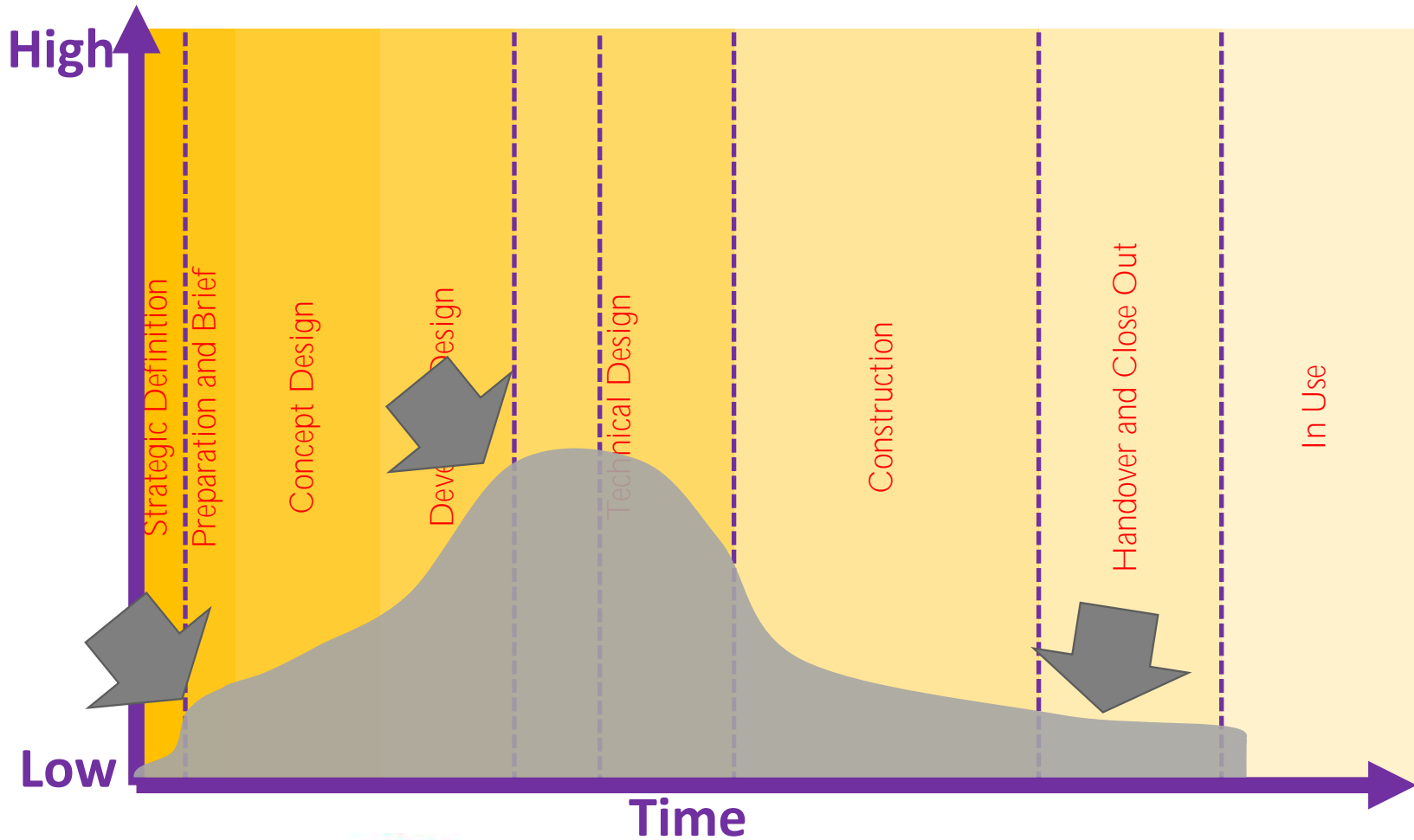


There is no direct path. ...But experience helps.

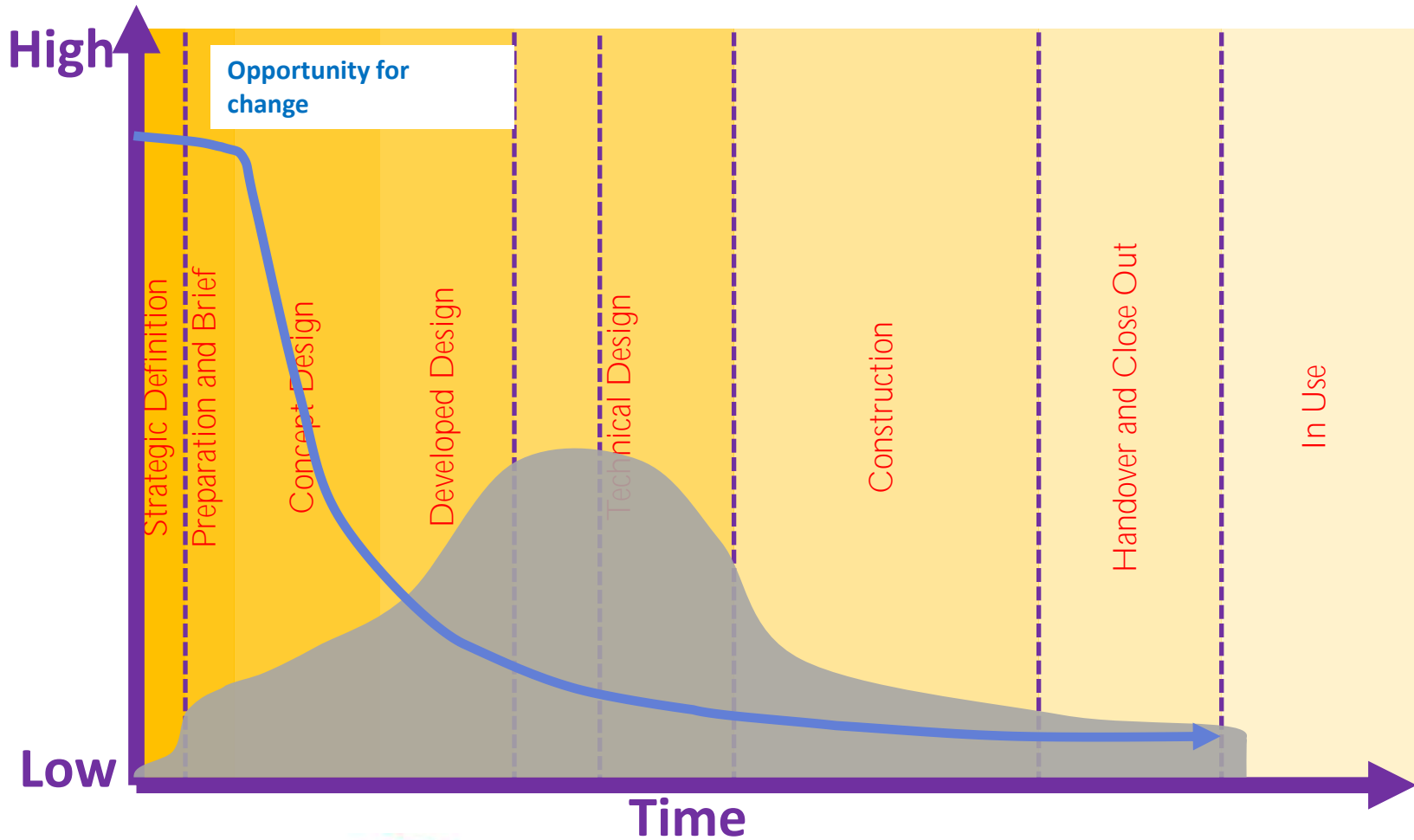
Risk management - Traditional



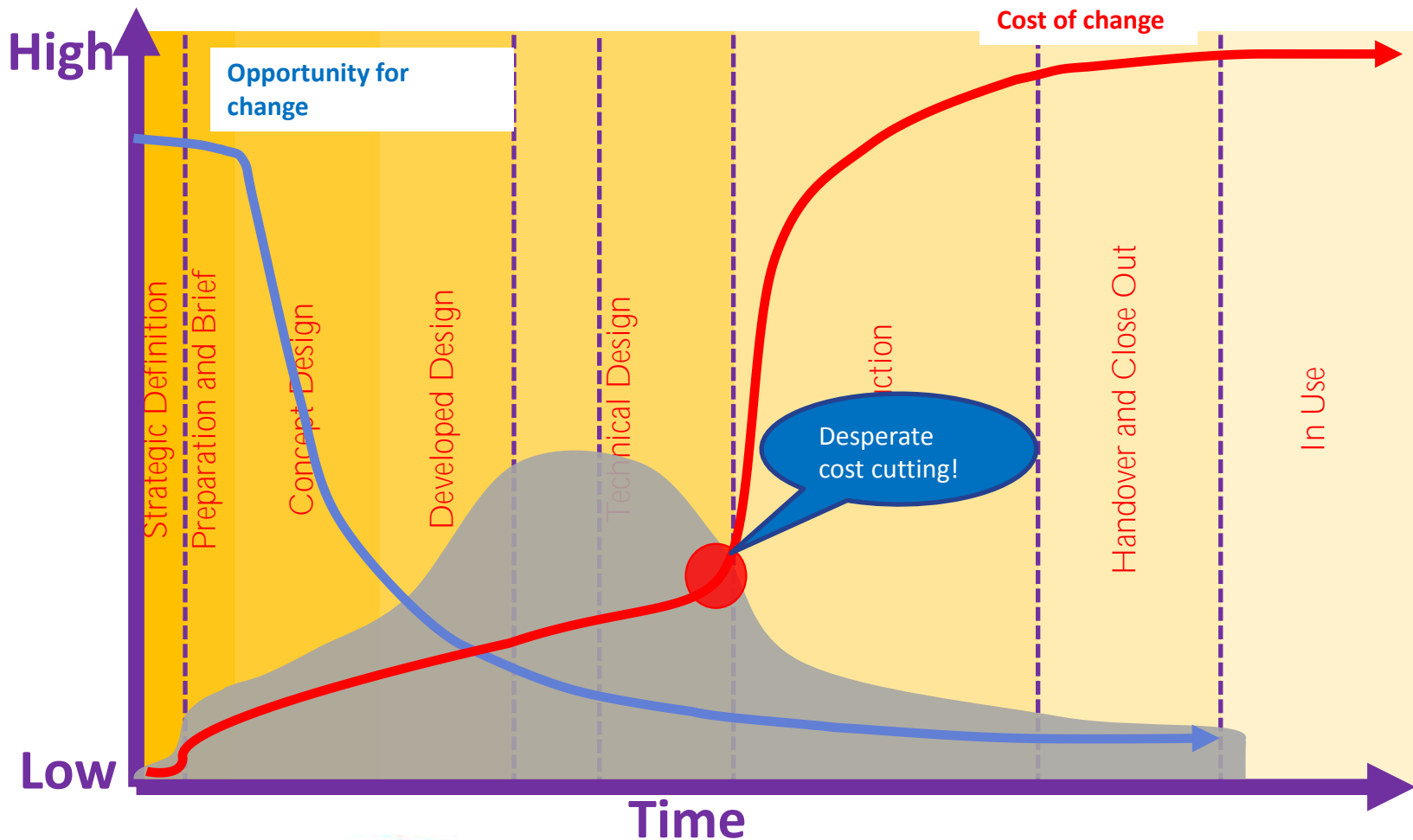
Risk management - Traditional



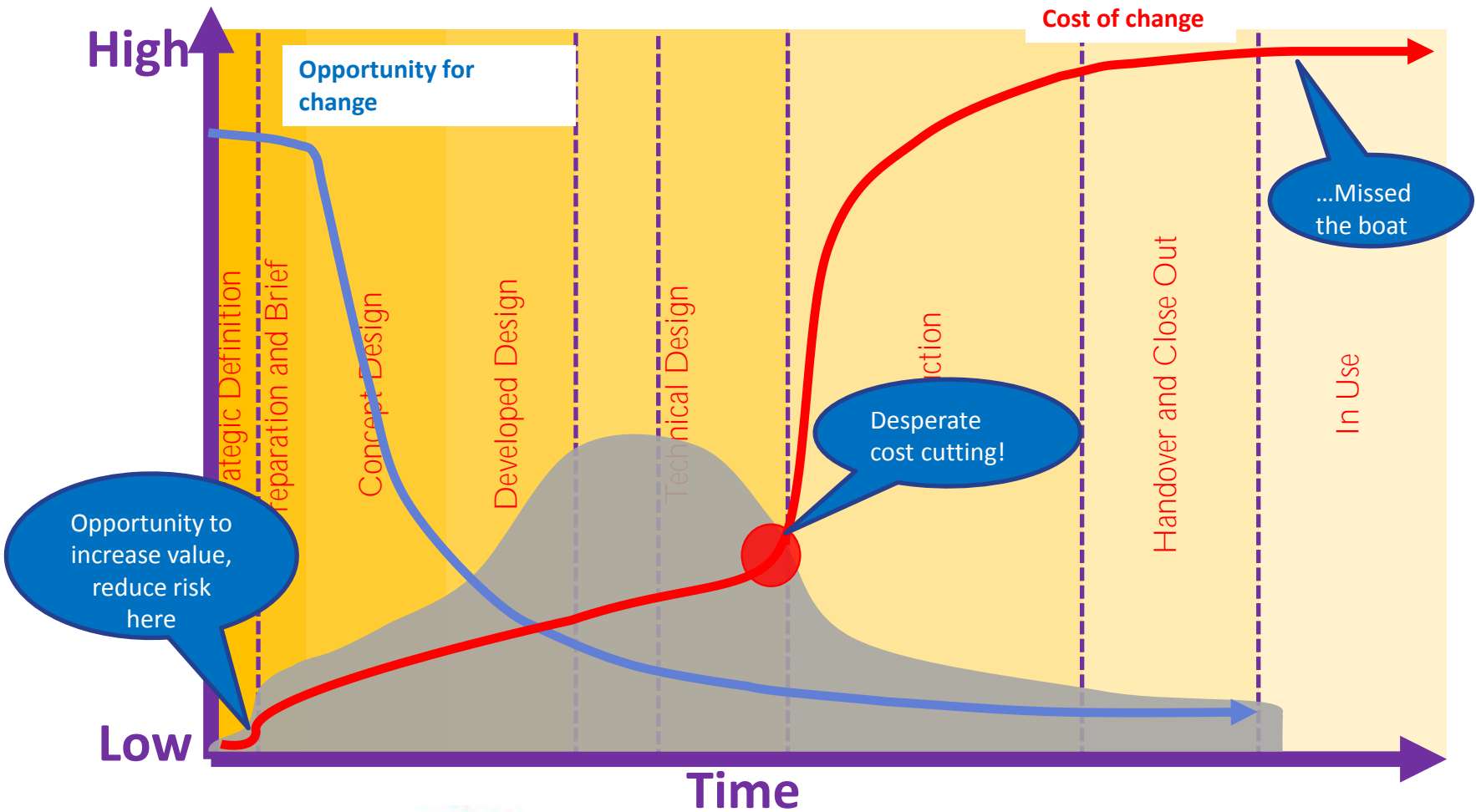
Risk management - Traditional



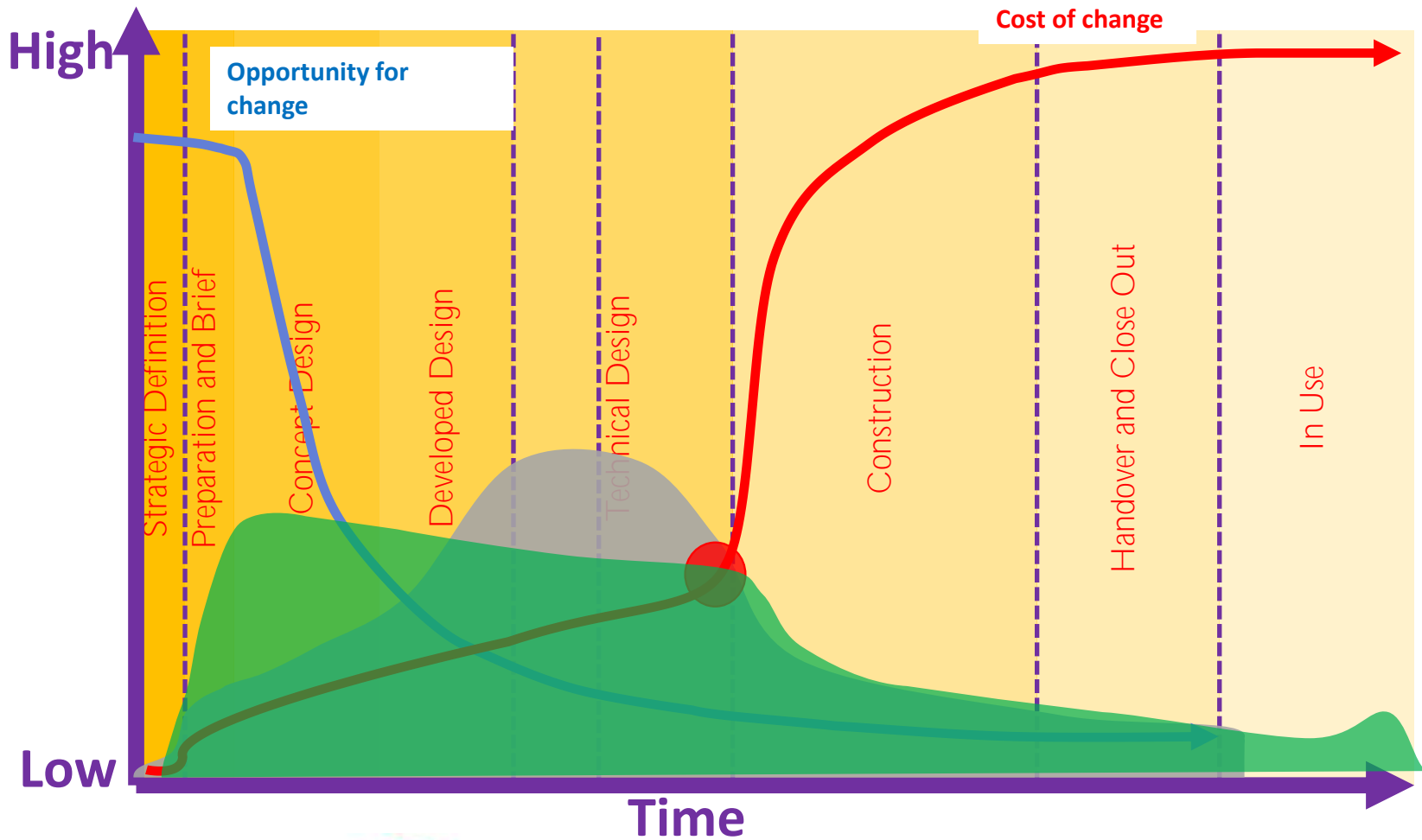
Risk management - Traditional



Risk management - Traditional



Risk management – Integrated



Certification Systems



Teamwork & goodwill



QA Systems

Elemental Solutions
Making the complicated simple

LEAP
Low Energy Architectural Practice

- Engage everyone as early as possible
- Value Engineer from day one
- Get an experienced team
- Earning respect and sharing reasonability

Design and build – what's the right way?
Contracts - Don't split up the CD collection!