

Rejuvenating Communities

Richard Gawthorpe
Managing Director

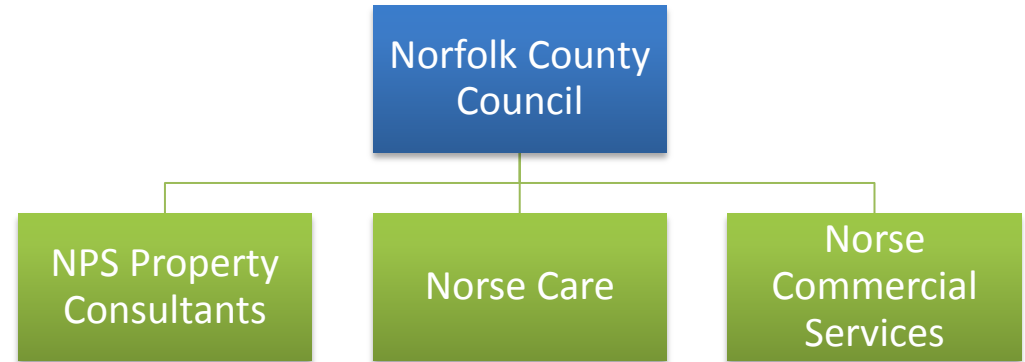


About us...



Norse Group

“As a 1/4Billion business we recognise that we have a **responsibility** to innovate and strive for **excellence**...”



Beattie Passive Build Systems

- Worldwide recognition
- Passivhaus Certified
- Simple
- Cost effective
- Raising standards

“...an opportunity for radical new thinking in the way we build today.”

“Beattie Passive is the first company in the UK to be awarded certification as a complete build system by the Passivhaus Institute in Germany”



Fusion of two industry giants...

£1/4Billion Turnover
10,000 Staff
Resources
Clientele



Patent and IP
Product
Expertise



Public | Private

10 year deal

Public and Private Sector

Raising standards
industry wide



Corporate **Social** Responsibility

- Recognising the significant benefits of 'passivhaus'
- Deploying 'passivhaus' philosophy into all that we do as designers

"effects on the
environment and impact
on **social** welfare"



Vision

- rejuvenate local communities
- provide employment to adults and young people
- use local businesses and suppliers
- for the public sector clientele, recycle the public purse locally



UK Context



Social

- 900,000 young people classified as being “Neet”
not in education, employment or training

Source: <http://www.bbc.co.uk/news/education-23315438>

- 2.51m classified as unemployed

Source: \\nor-file5.norwich.nps.local\RedirectedProfiles\$\npsnrrg01\Desktop\BBC News - Economy tracker
Unemployment.mht



Economic

- “We expect a **gradual recovery** in the UK economy, but while there is now light at the end of the tunnel, there are **still risks** relating to the **Eurozone** and the **wider global environment** that businesses need to manage.”

Source: <http://www.pwc.co.uk/the-economy/publications/uk-economic-outlook/index.jhtml>



Environmental

- Winter Blackout Risk 'Highest For Six Years'

Source: <http://news.sky.com/story/1151305/winter-blackout-risk-highest-for-six-years>

- The government is committed to requiring all new homes from 2016 to meet the zero carbon standard

Source: Next steps to zero carbon homes - Allowable Solutions – August 2013



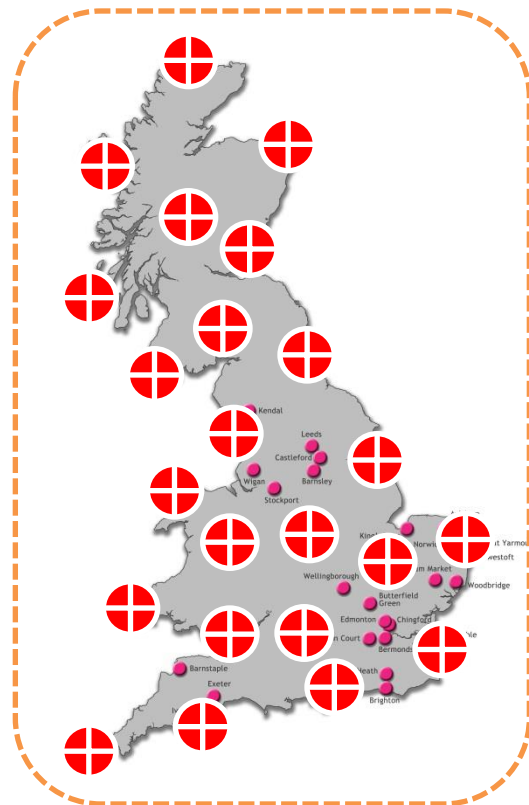
The Bigger Picture...



Local | Regional | National

Engage at a Macro and Micro Level

- Macro = national (government)
- Micro = local (communities)



All Sectors

- New Homes

“Primary place shortfall of 120,000, claims Labour”
Source: BBC News 24.07.13

“Banks have begun to unveil mortgages which they will offer under the expanded Help to Buy scheme”
Source: BBC News 08.10.13

- Education Facilities

- Healthcare

“as many as four people in five living in residential care may be affected, raising questions about the way they are cared for”
Source: Alzheimer's Society



Rejuvenating Communities



Employment

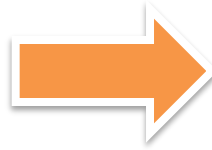
Training and Development

Local economy and
enterprise

Local supply chain

Localism Act

Health and Wellbeing



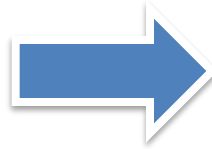
Local and national
economy

Cost savings

Income generation

LA finances

Central Government
funding



Resource Efficiency

Energy Efficiency

Global Energy Issue

Carbon Footprint

Zero Carbon Agenda



Environmental



Case Study...



The Client Brief...

- Deliver 12 new homes (over three sites)
- For same cost as Code 3
- One site delivered by 31 March 2014
- Social benefits



BPN Deliverables

- 12 homes 4 passivhaus certified
- Overall cost less than Stage D Cost Plan



BPN Deliverables

- At least one site will be handed over by 31 March
- Local college, local young people, local businesses and local suppliers



Caister



Bradwell



Martham



Procuring BPN



A number of options...

Whole Life Asset Management

Design | Construct | Deliver | Manage

Design License

Contractor

Project Manage

Manage Asset



Thank you...



Contact Us

T

01603 706236

W

Beattiepassivenorse.co.uk

E

info@beattiepassivenorse.co.uk

