

Large-scale project

Lancaster Cohousing

Jon Sear – Founder and Project Manager

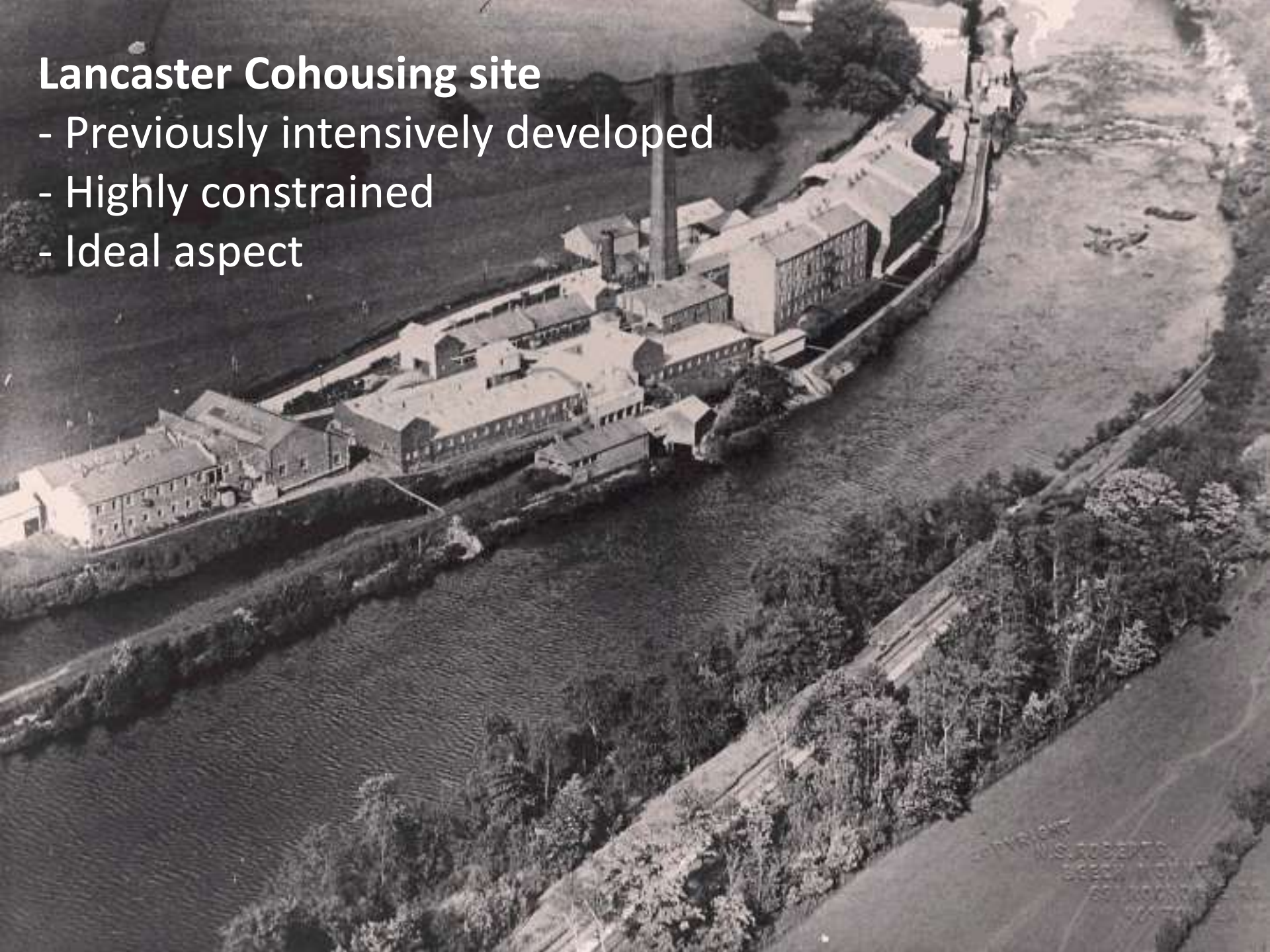
Why large scale Passivhaus?



- our vision – *“a cutting edge example of sustainable design and living”*
- respected standard – attractive to residents
- prevent erosion of fabric specification at value engineering

Lancaster Cohousing site

- Previously intensively developed
- Highly constrained
- Ideal aspect



Properties sold by word of mouth and/or online....

Lancaster Cohousing



[Home](#) [About us](#) [About the project](#) [Join](#) [Documents](#) [Contact](#) [Press](#) [News](#) [Events](#)

Just **1 1 bed flat** remaining

Welcome to Lancaster Cohousing

Nearly all the residents have now moved into **Forgebank**, our cohousing project of **private homes, community facilities, workshops/offices/studios** and shared outdoor space. The site is just outside Lancaster on the outskirts of the village of Halton and offers stunning views of the river Lune. The project is being built on **ecological values** in partnership with our architects, **Ecoarc** and our builders, **Whittle Construction**.

We only have one **1-bed flat** left for sale, with a **second flat** for sale privately. If the house type you are interested in is not currently available please consider applying to our **waiting pool** or **contacting us** for further information.



41 homes in 7 blocks, all certified Passivhaus

Common facilities

Refurbished office / workshop building sharing district heating and electricity micro grid



Car - free street
central to design





Scheduling deliveries...

Moisture management...



Insulation
– Quality control!



Airtightness



Residents survey

- ‘Exceptionally high scores’ for house quality
- 90% said ‘needs well met’
- Enjoying community living but lots of work!



