

A low carbon future: Leeds Climate Commission





Leeds 2030

Our vision to be the best city in the UK

Vision for Leeds 2011 to 2030

Leeds

- 20,000 'Back-to-Backs'
- One third households are one person (50% of these are aged 65+)
- 17% of Leeds residents have long term disability or health problem (40% of Council tenants)
- 140 ethnic groups in the city (19% of population)
- 164,000 residents live in 10% most deprived areas of UK
- > 60,000 new homes by 2028

Trends & Challenges

- Growing and ageing population with more diversity
- Longer life expectancy but not healthy life (Obesity) expectancy and increased inequalities
- Increased income inequality
- Rising individualism and expectations
- Creative & digital economy growth
- Congestion, air quality, mass transport systems
- Housing quality and quantity
- Warmer climate, extreme weather
- Higher energy, fuel and food prices
- Renewables, efficiency and carbon capture

Breakthrough Projects

- Council's role in making the Tour de France Grand Départ in 2014
- Teams and individuals from different Directorates, organisations and communities
- This approach has been adopted to work on the ideas that will make the biggest difference to the people of Leeds.
- The city's breakthrough projects are focused on outcomes, utilising smart city thinking...



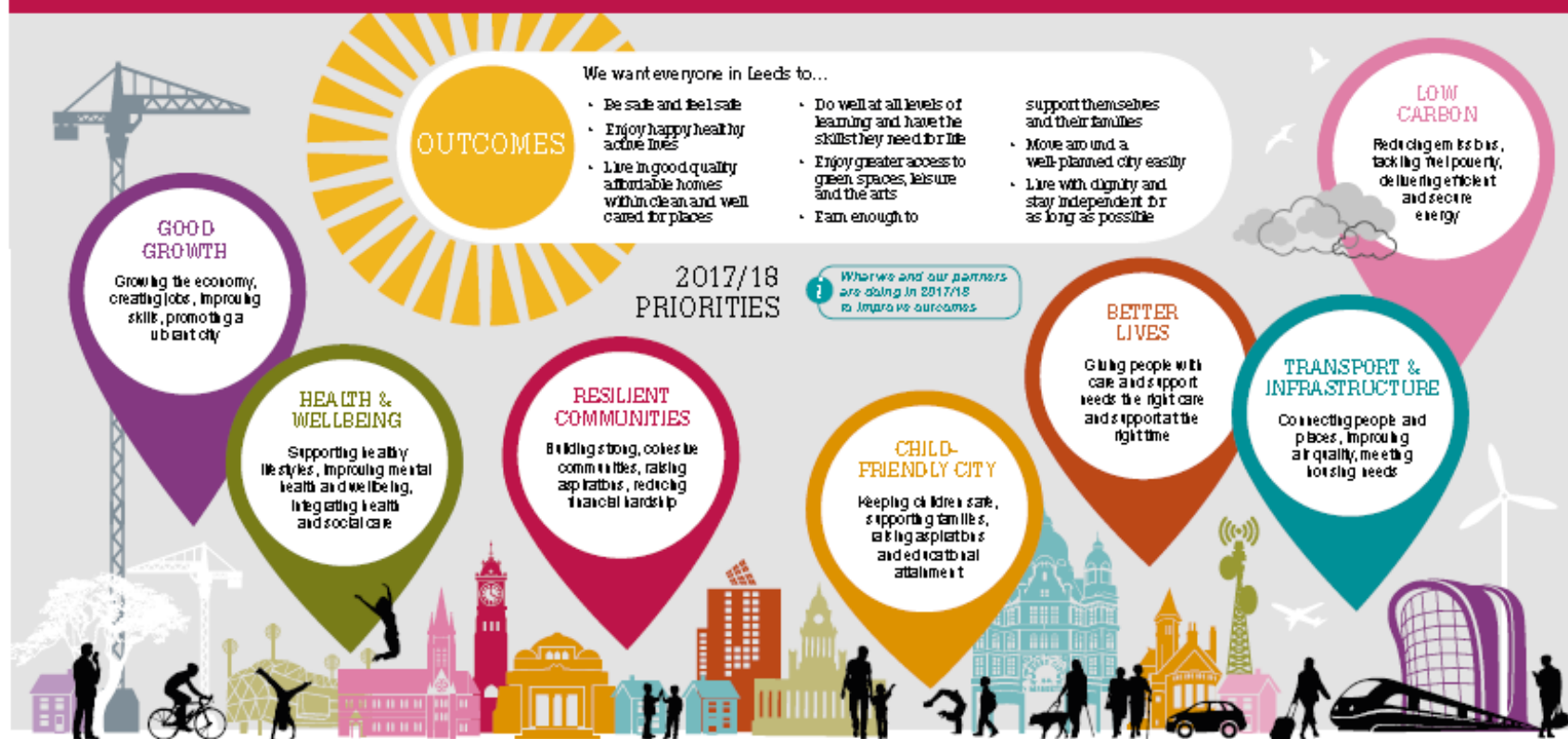
Eight Breakthrough Projects

- Cutting carbon and improving air quality
- Hosting world-class events and creating a vibrant city centre that all can benefit from
- Housing growth and high standards in all sectors
- More jobs, better jobs
- Making Leeds the best place to grow old in
- Tackling domestic violence and abuse
- Early intervention and reducing health inequalities
- Strong communities benefitting from a strong city

BEST COUNCIL PLAN 2017/18:

Tackling poverty and reducing inequalities

AMBITIONS • Leeds... A Strong Economy and a Compassionate City • Leeds City Council... An Efficient and Enterprising Organisation



BREAKTHROUGH PROJECTS – Helping deliver the Best Council Plan

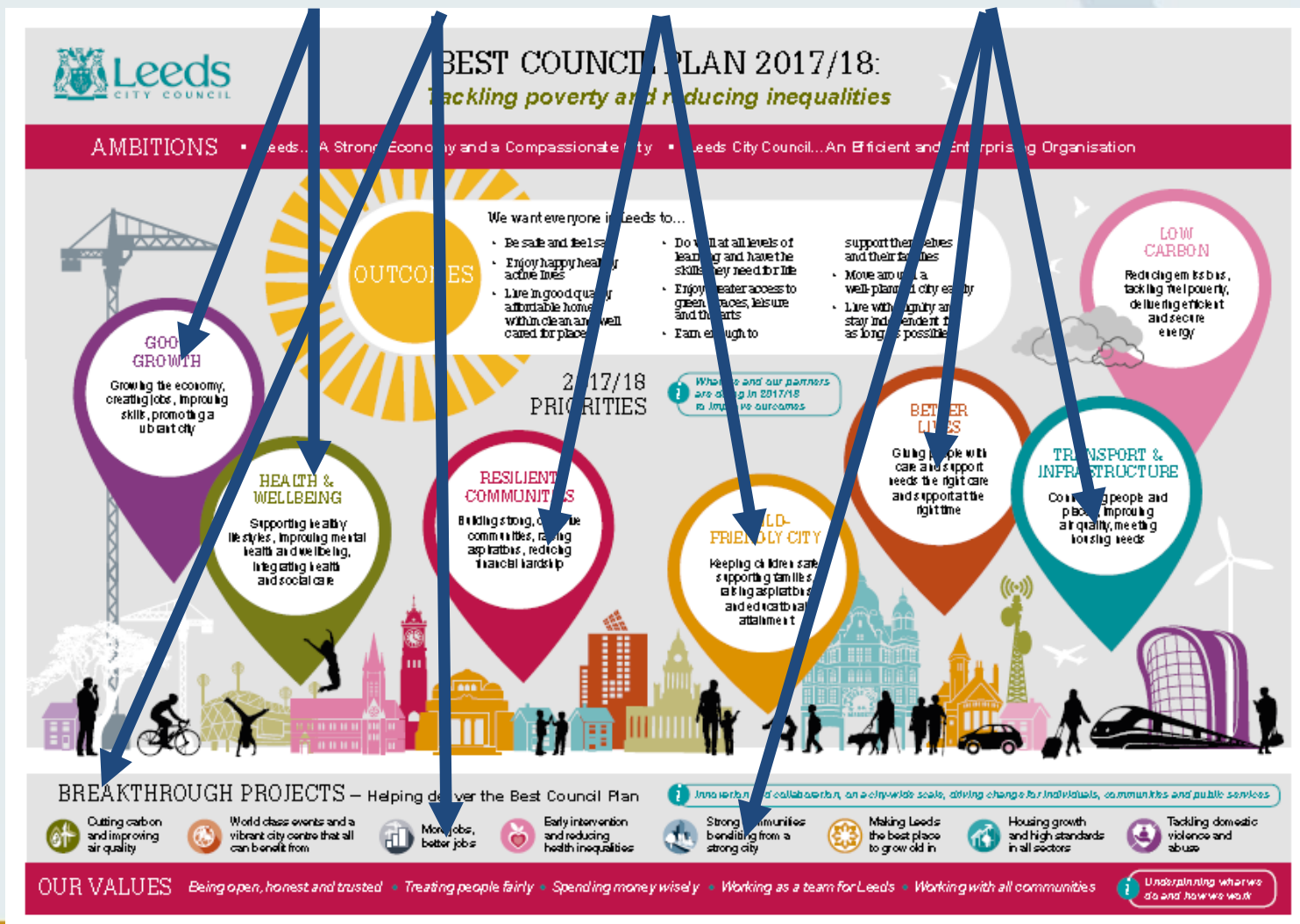
Innovation and collaboration, on a city-wide scale, driving change for individuals, communities and public services

-  Cutting carbon and improving air quality
-  World class events and a vibrant city centre that all can benefit from
-  More jobs, better jobs
-  Early intervention and reducing health inequalities
-  Strong communities benefiting from a strong city
-  Making Leeds the best place to grow old in
-  Housing growth and high standards in all sectors
-  Tackling domestic violence and abuse

OUR VALUES Being open, honest and trusted • Treating people fairly • Spending money wisely • Working as a team for Leeds • Working with all communities

Underpinning what we do and how we work

Leeds Beckett University & University of Leeds priority research areas



New Council Homes The “Leeds Standard”



Little London, Beeston Hill & Holbeck PFI

- 388 homes completed 2017



Little London, Beeston Hill & Holbeck PFI

- 388 homes completed 2017



First schemes– Railway Close (East Park Rd)

- 32 homes completed May 2016



First schemes– Cardigan Green

- 8 homes completed December 2016



First schemes – Squinting Cat (Plantation)

- 18 flats completed August 2016



yorkshirenews@o2.co.uk



First schemes – Garnets, Beeston

- 25 houses completed July 2018



First schemes – Broadleas, Bramley

- 24 houses completed August 2018



Current Schemes – Whinmoor Pub site

- 22 houses – due for completion November 2018



First schemes – Wharfedale View Extra Care Housing (Haworth Court)

- 45 flats completed December 2016

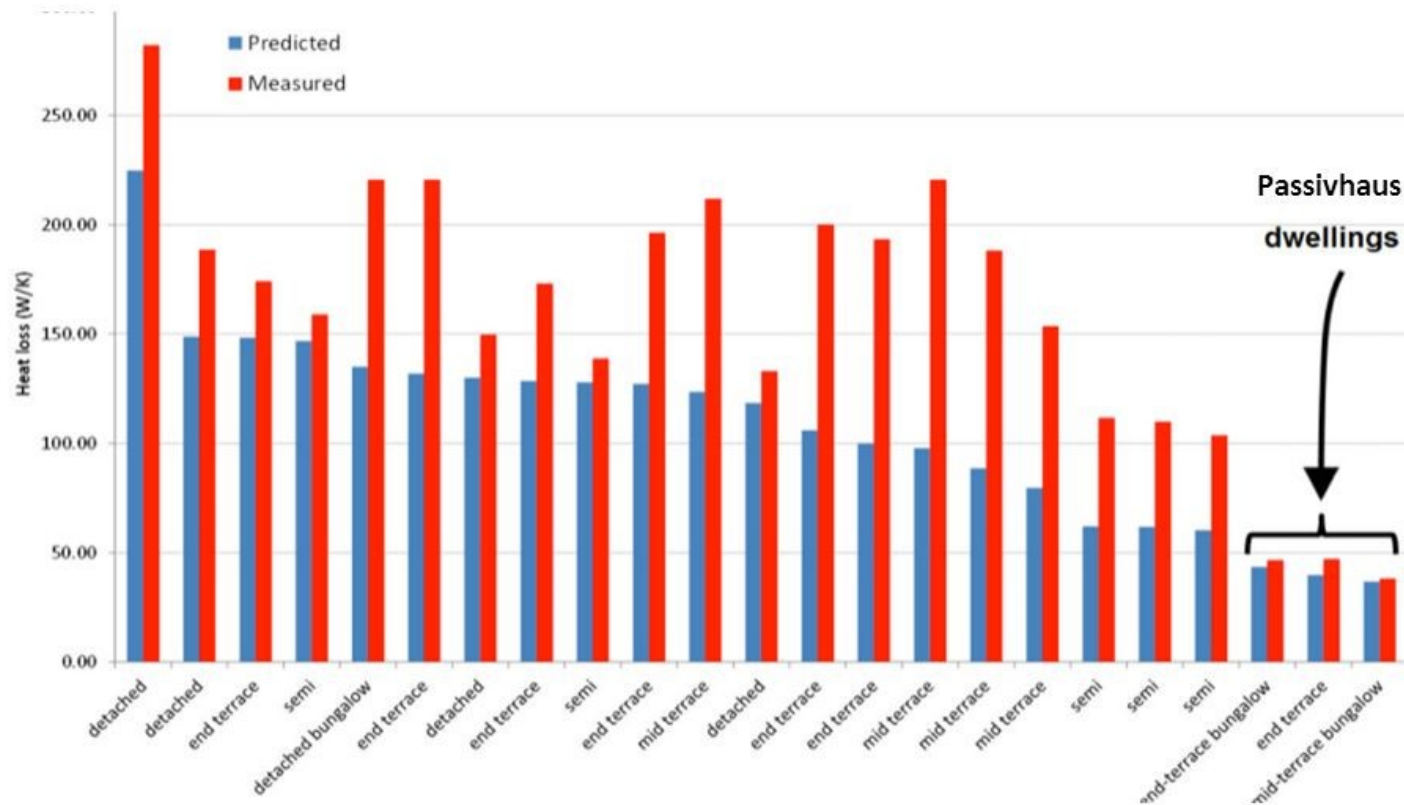




homes, communities, cultures

Our journey to Passivhaus and beyond...

Performance Gap



Source: Leeds Beckett University







homes, communities, cultures

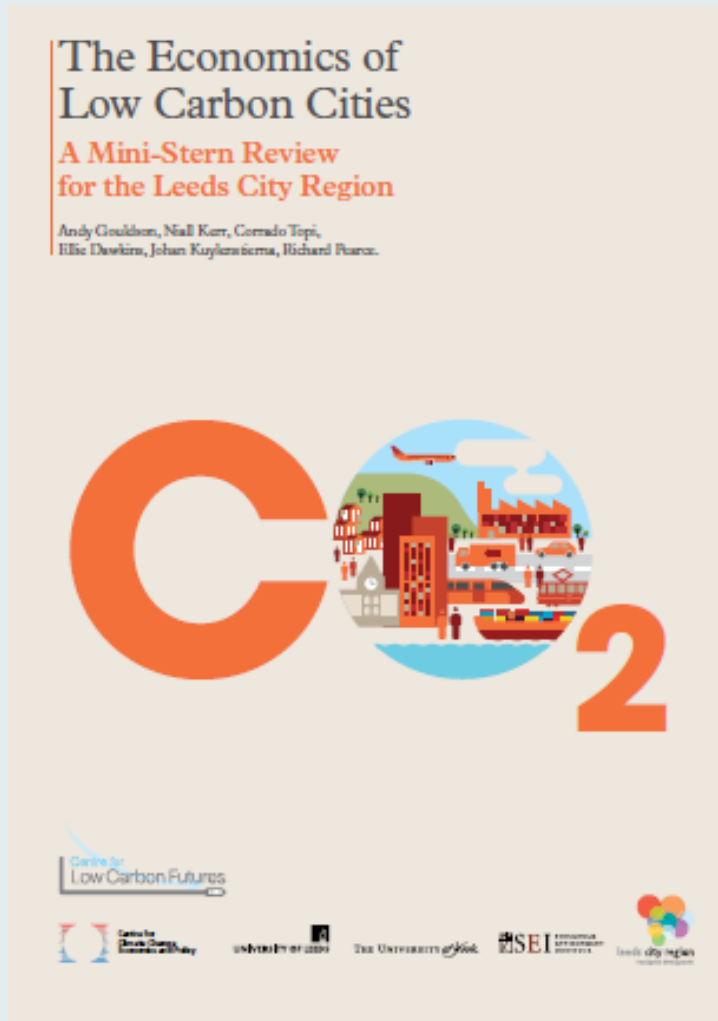
Martyn Broadest

Director of Home

martyn.broadest@connecthousing.org.uk

@martynbroadest 07985 887505

Mini Stern for Leeds City Region



- 10% of GDP leaves local economy through energy bills
- Increase to 15% by 2022
- Invest 1% of GDP for 10 years leading to...
- Reduction in energy bills
- 4 year financial viability
- Job creation
- Increased energy security and competitiveness
- Social benefits

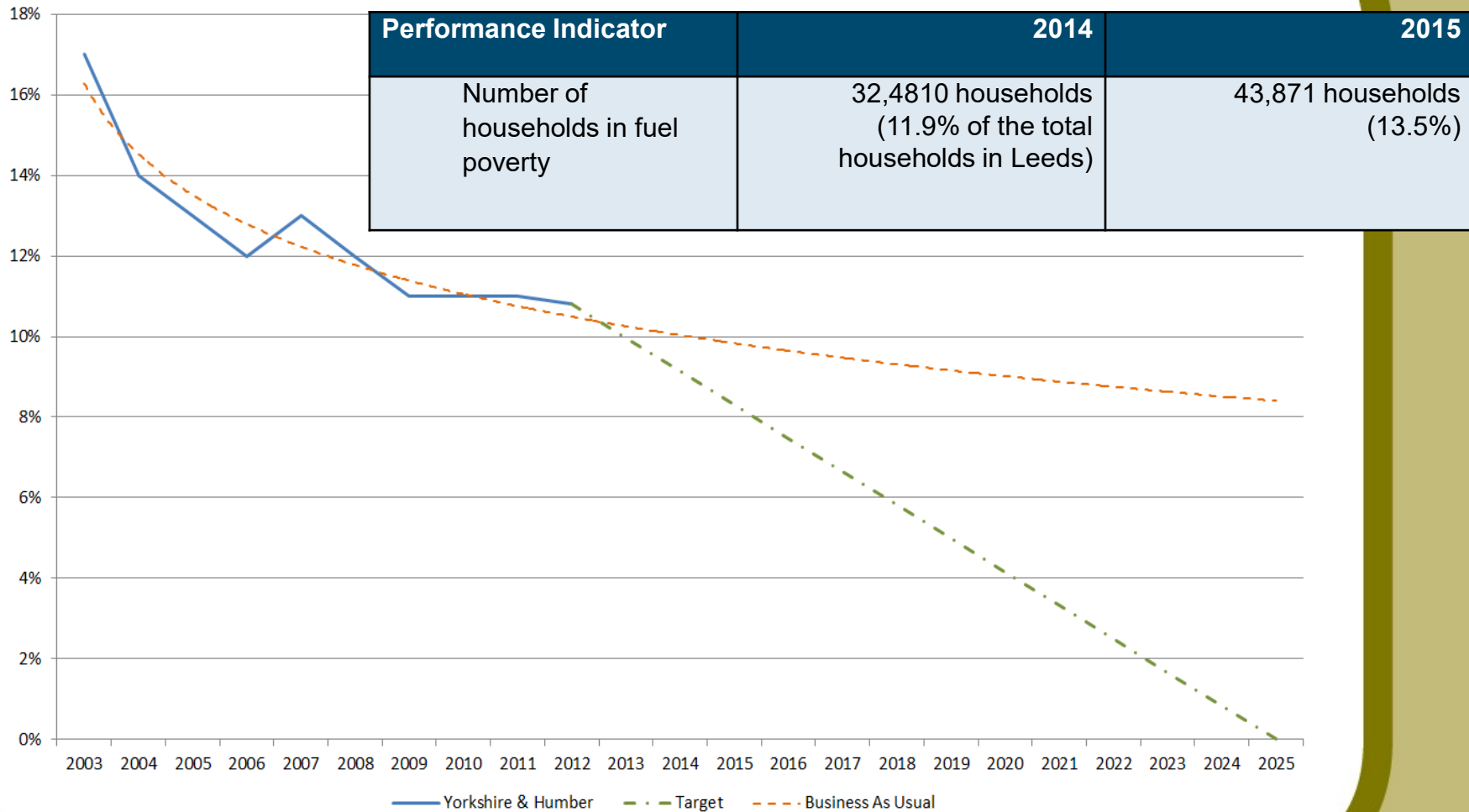
Low Carbon Economy



www.cartoonstock.com

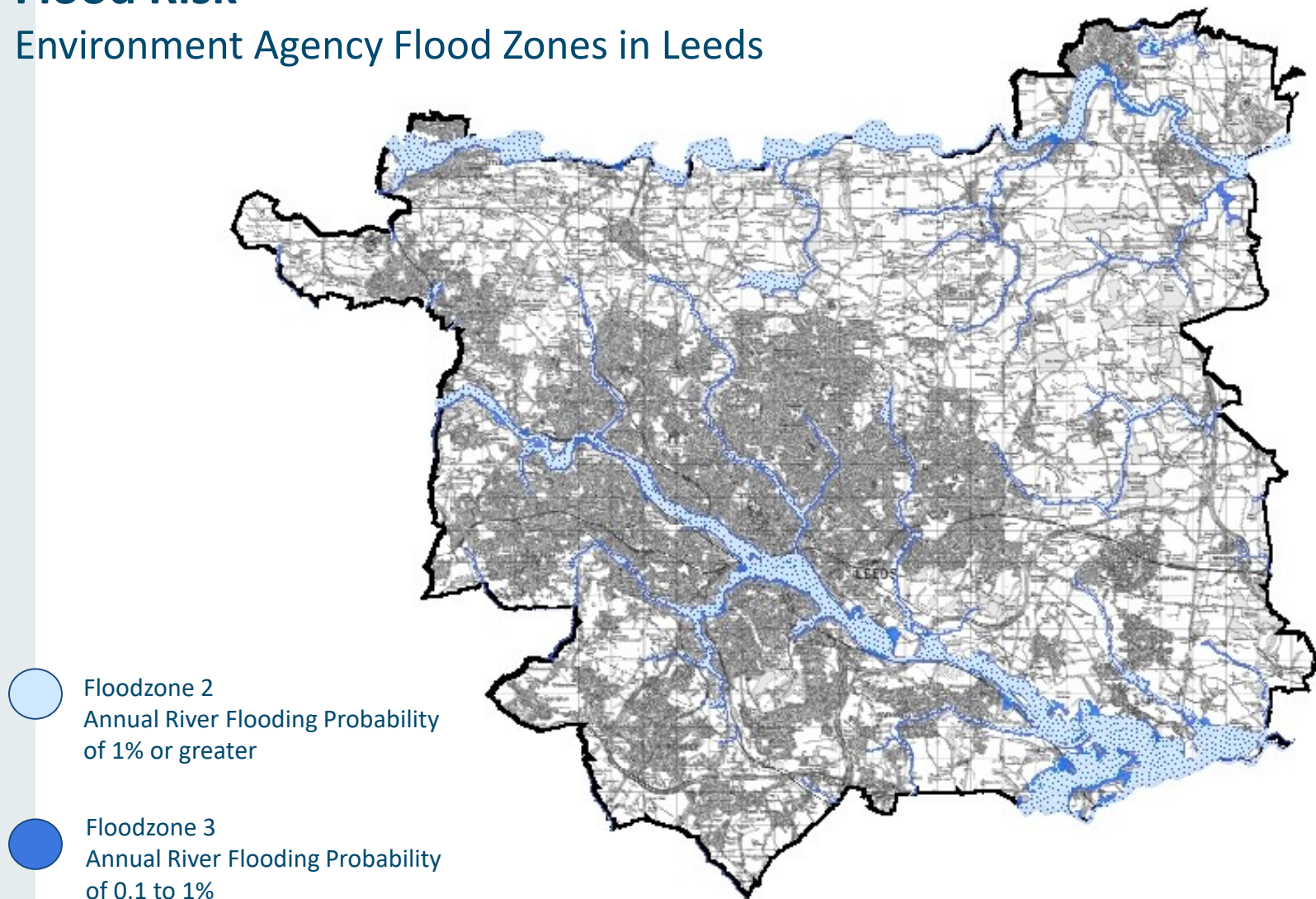
Performance Indicator	Baseline year [approx. CO2 emissions]	Target [approx. CO2 emissions]	Progress to date using latest data available		
			Year	Emissions (m tonnes)	% reduction from baseline
Reduced carbon emissions across the city	2005 [c5m tonnes]	40% reduction in CO2 emissions by 2020 [c3m tonnes]	2005	5.006	0%
			2006	4.992	0.28%
		60% reduction in CO2 emissions by 2030 [c2m tonnes]	2007	4.849	3.14%
			2008	4.776	4.59%
		80% reduction in CO2 emissions by 2050 [c1m tonnes]	2009	4.309	13.9%
			2010	4.492	10.3%
			2011	4.070	18.7%
			2012	4.310	13.9%
			2013	4.162	16.9%
			2014	3.599	28.1%
			2015	3.386	32.4%

Yorkshire & Humber LIHC Fuel Poverty



Flood Risk

Environment Agency Flood Zones in Leeds





Councils & Energy Planning

- No statutory role
- Private market decides optimum mix of technologies
- Land Use Planning is a blunt instrument for energy infrastructure and demand, it does not generally consider resource consumption and is relatively ineffective on existing development
- Leadership; Trusted Brand; Energy Buyer; Asset Owner; Planning can identify land suitable for energy projects; Regeneration; Council Housing; Waste; Transport

Leeds Climate Commission

- Promote leadership on climate change
- Provide authoritative advice
- Focus on most cost effective measures and the largest organisations
- Monitor progress
- Collaboration and best practice
- Forum for innovation

Involvement

ARUP

ceg:

CITU

 THE CHURCH
OF ENGLAND
Diocese of Leeds


Cofely

 Environment
Agency

 First
transforming travel


friends of
the earth

 Leeds
CITY COUNCIL

 LEEDS
BECKETT
UNIVERSITY

 LEEDS
CIVIC
TRUST

 Northern
Gas Networks

 NODE
LEEDS

 OPEN
SOURCE
ARTS

 SBB
Social Business Brokers

 UNIVERSITY OF LEEDS

 VEOLIA

 WALKER
MORRIS

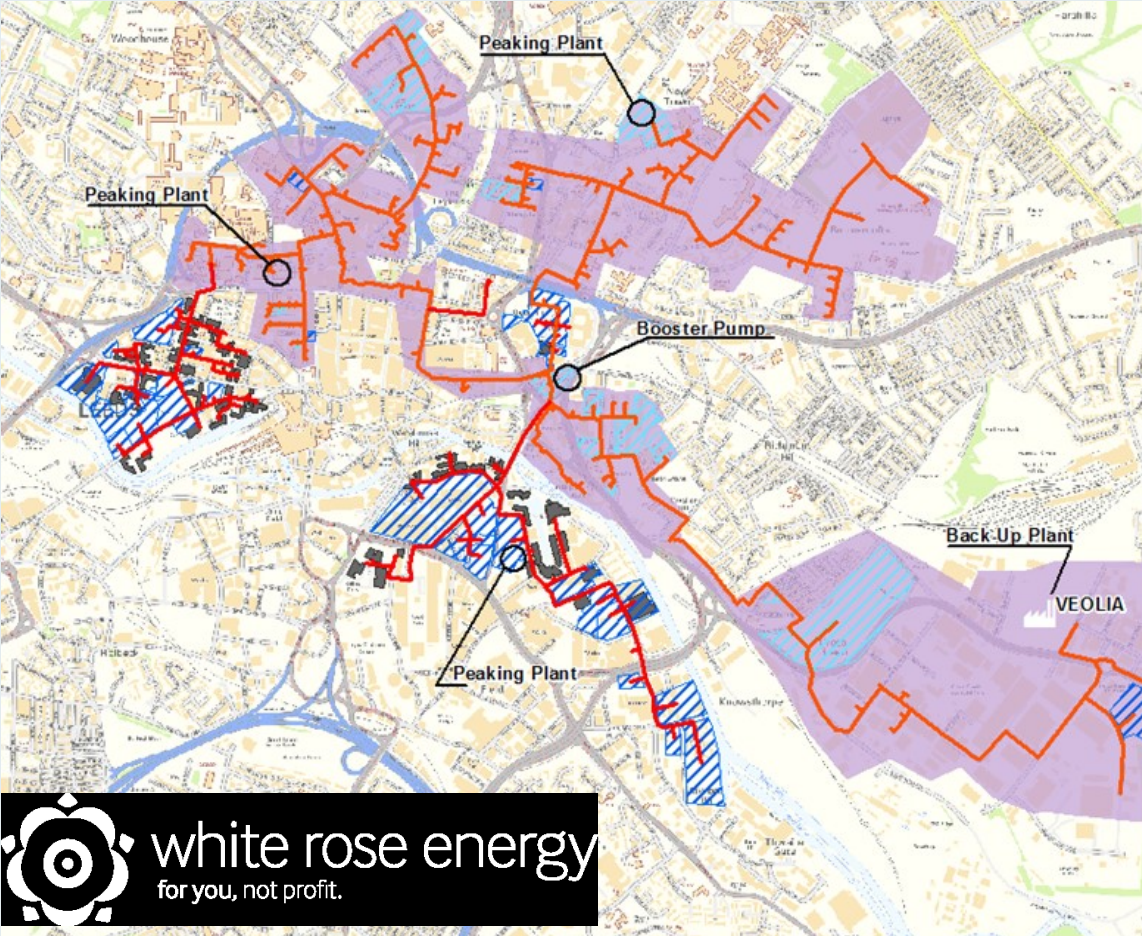
 WEST YORKSHIRE
COMBINED AUTHORITY

 West & North
Yorkshire Chamber
of Commerce
Accredited

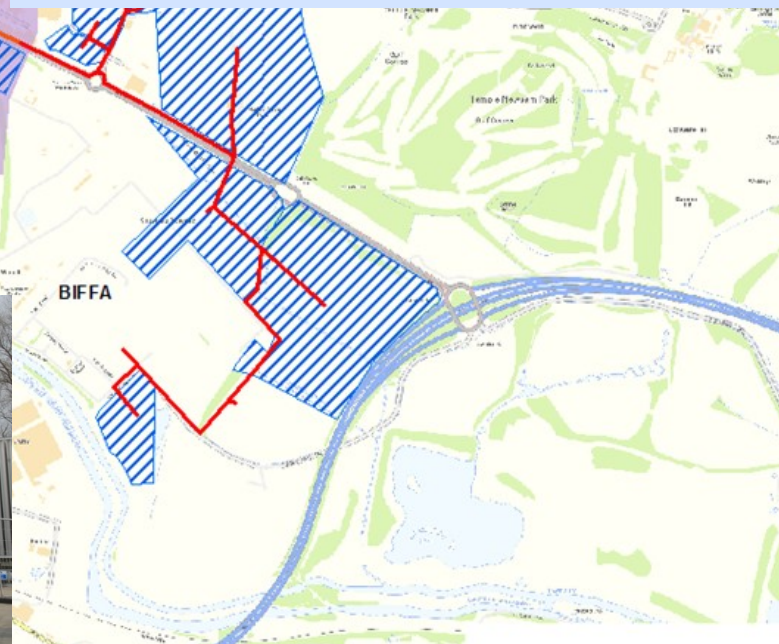
 YorkshireWater

The Economics of Climate Action

- **Forecast: By exploiting only the cost-effective or profitable options across the city Leeds could save £277m a year**
- Transport costs could be reduced by £149m
- Household energy bills could be cut by £82m
- Running costs for schools, hospitals, offices etc. could be cut by £32m
- Business operating costs could be reduced by £14m
- **This would create 4,200 extra years of employment within the city**



Low Carbon Leeds



Solar PV on Council Homes



Residential Solar PV

Estimated saving:

8,375 TCO₂ pa





Leisure Centre

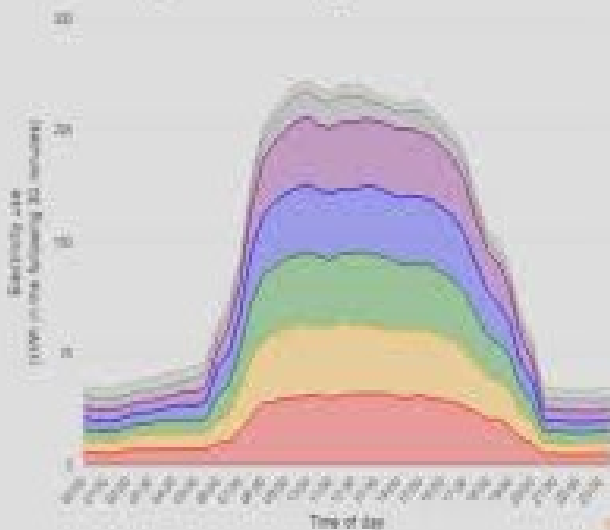
Welcome

CCTV
in operation

Corporate Solar PV
Estimated saving:
45 TCO₂ pa

Low Carbon Working Group Solar Solutions for Leeds

Total electricity use at 2 Great George Street from 24/11/2014 to 30/11/2014



DATA MILL NORTH

Data ▾

Visualisations ▾

Community ▾

ODI Leeds

More ▾



Go to Datasets



Go to Products



Latest Blog Post

Next Event

Latest Product





 **Leeds**
CITY COUNCIL

Building for Tomorrow Today
Sustainable Design and Construction
Leeds Local Development Framework



Supplementary Planning Document
August 2011





Refuse Collection
Estimated saving:
154 TCO₂ pa

CHARGEPOINT
NETWORK

ChargePoint®
by Coulomb Technologies



Need help? 1-888-758-4389 mychargepoint.net



CABLECARTOONS.COM



City-wide collaboration







Search 

 Leeds [Back to map](#)

Leeds Climate Commission

<http://leeds.candocities.org/>