

#UKPHC19

app.sli.do

THE ROLE OF RETROFIT IN DECARBONISING CITY REGIONS

Matt Rooney - Anthesis





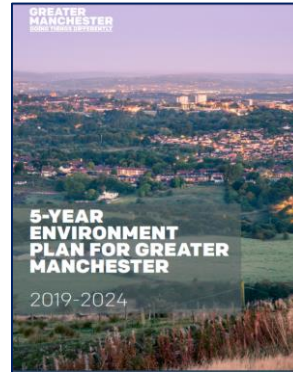
City and region support

Emissions measurement & modelling

SCATTER



Strategy formulation



Implementation



City & region support



Emissions modelling

GMCA GREATER
MANCHESTER
COMBINED
AUTHORITY


Department for
Business, Energy
& Industrial Strategy


CORE CITIES

SCATTER

Setting
City
Area
Targets and
Trajectories for
Emissions
Reduction

 **Anthesis**



Tyndall°Centre
for Climate Change Research



A technical panel

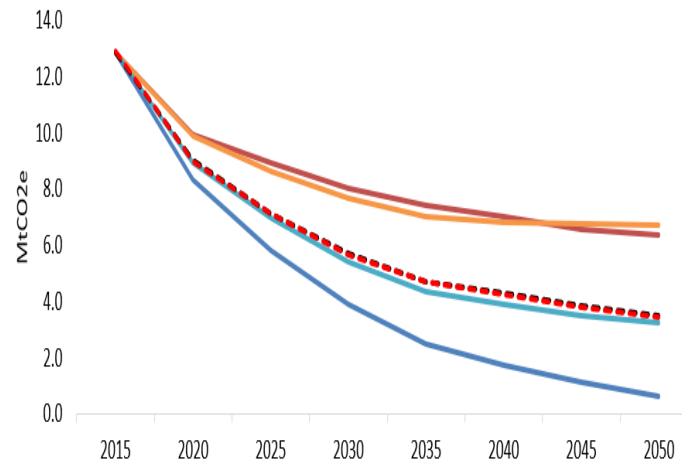


SCATTER overview

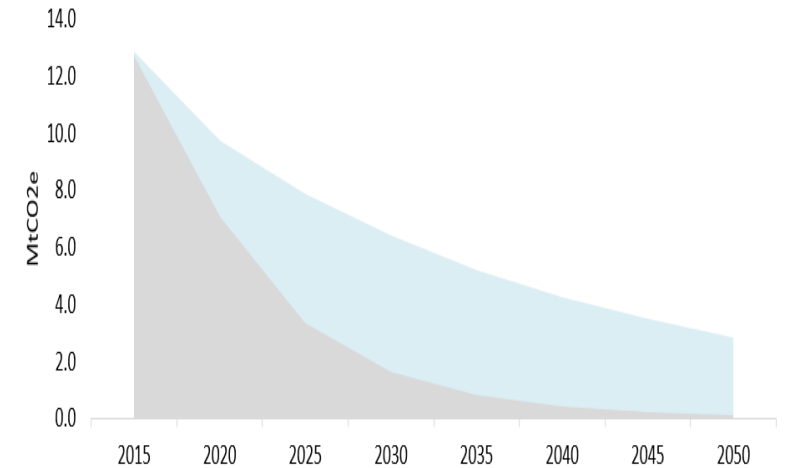
1 GHG Inventory



2 Pathways tool



3 Carbon Budget



1 GHG Inventory



- Baselineing
- Ensuring compliance
- Ease of reporting

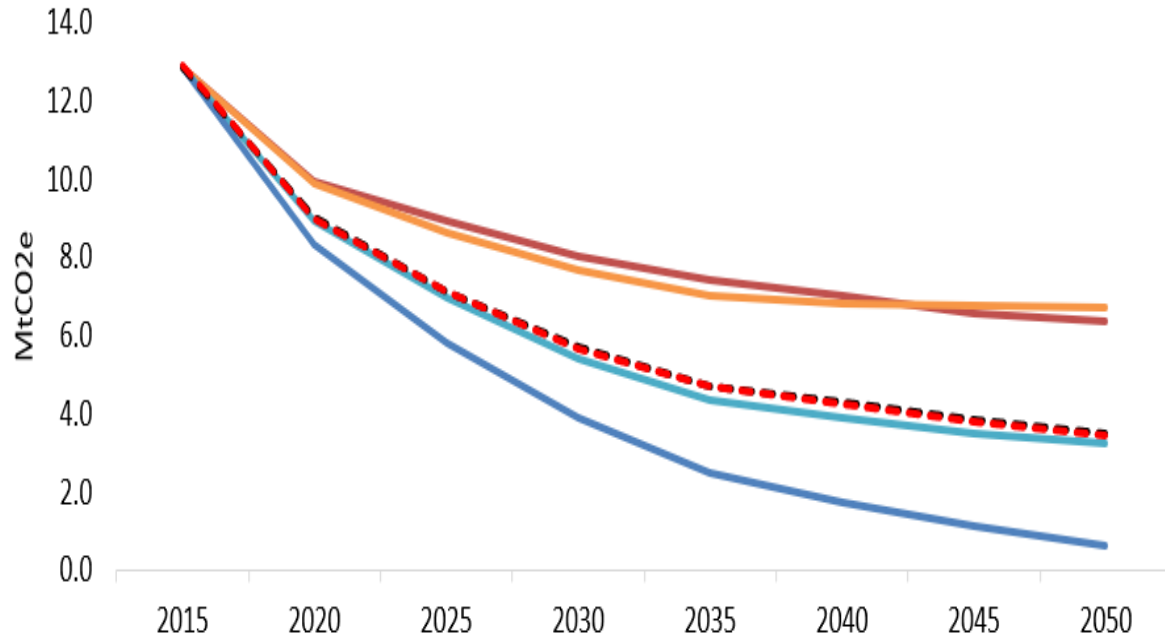


GREENHOUSE
GAS PROTOCOL



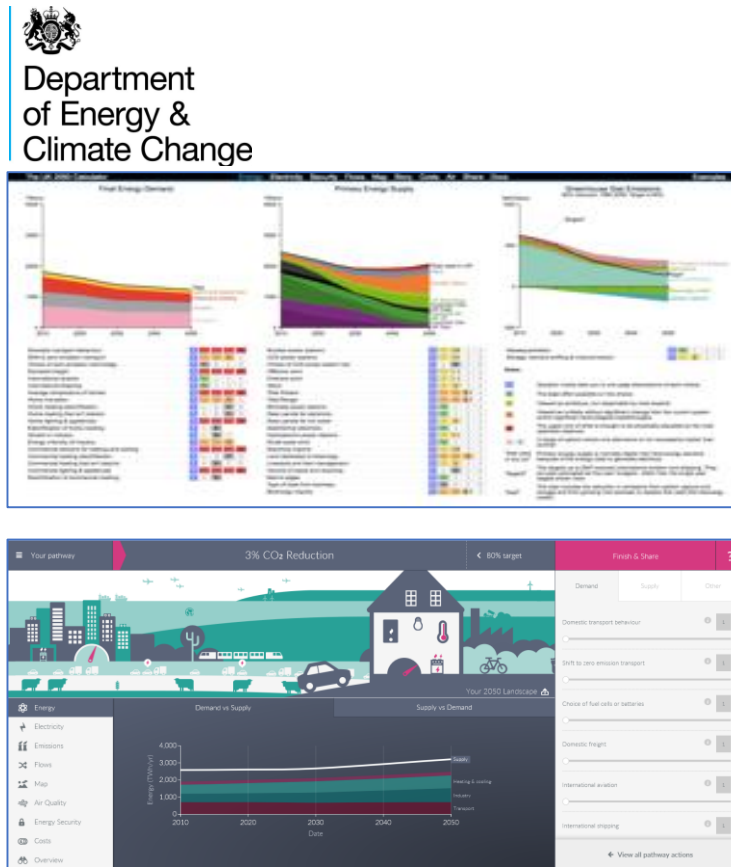
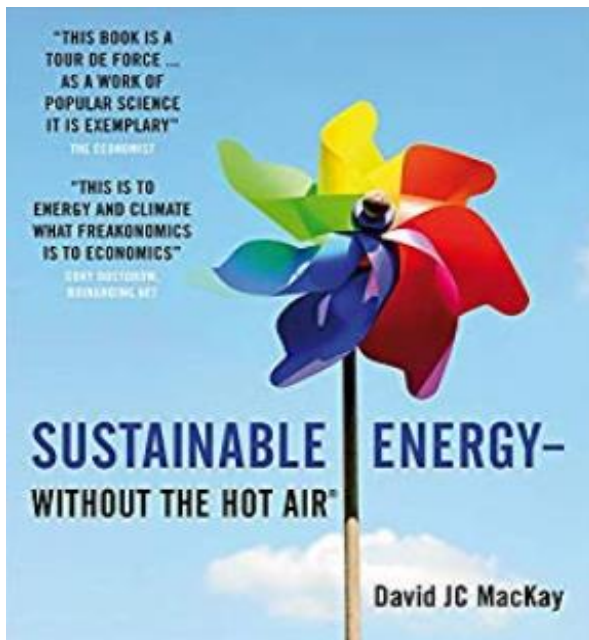
GLOBAL COVENANT
of MAYORS for
CLIMATE & ENERGY

2 Pathways



- Tool provides various emissions ‘pathways’ or ‘scenarios’ to 2050
- Over 35 carbon reduction methods 4 levels of ambition covering:
 - Low carbon energy supply
 - Domestic buildings
 - Commercial buildings
 - Transport
 - Waste
- Pathways allow cities & authorities to compare & contrast levels of existing action against

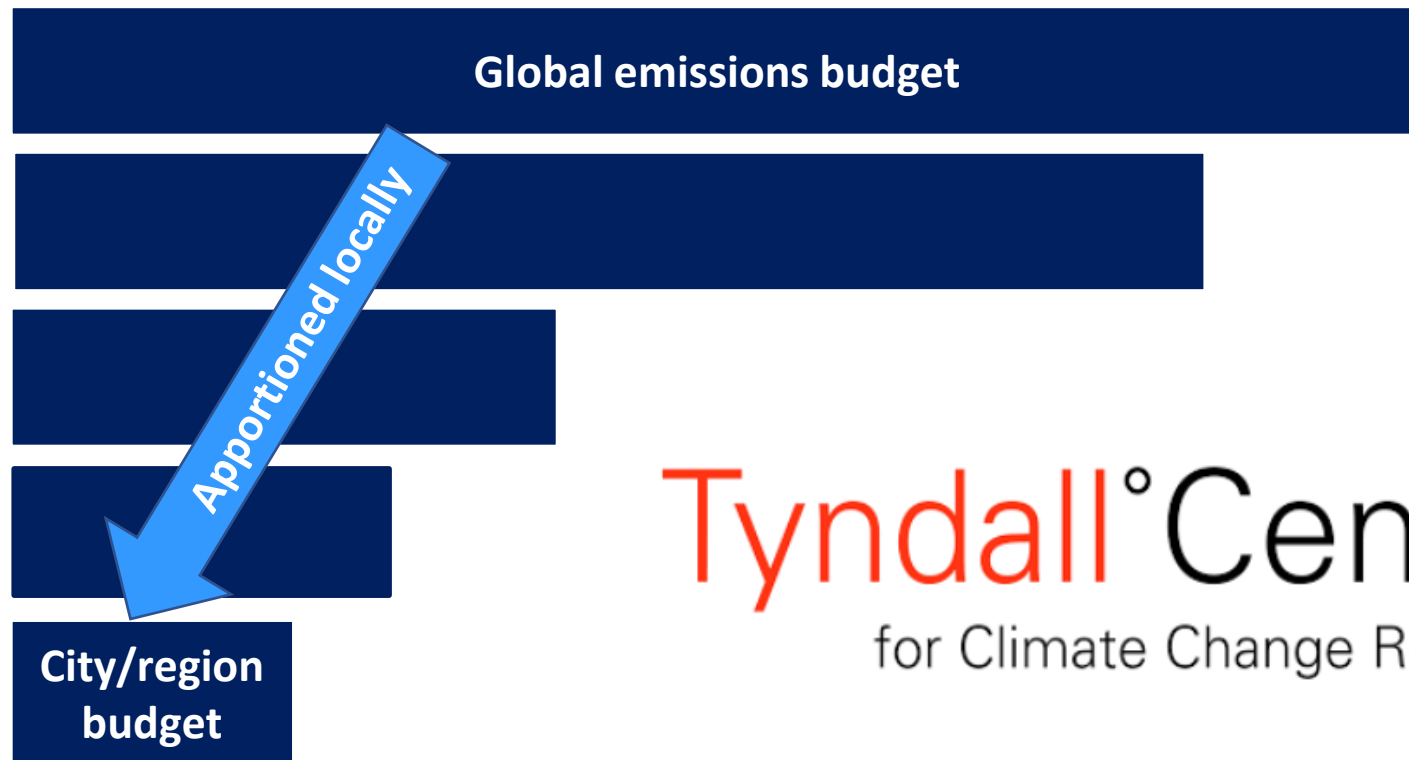
2 Pathways



Key modifications

- 1) Scaled down to subnational regions
- 2) Pushed ambition further

3 Carbon Budgets

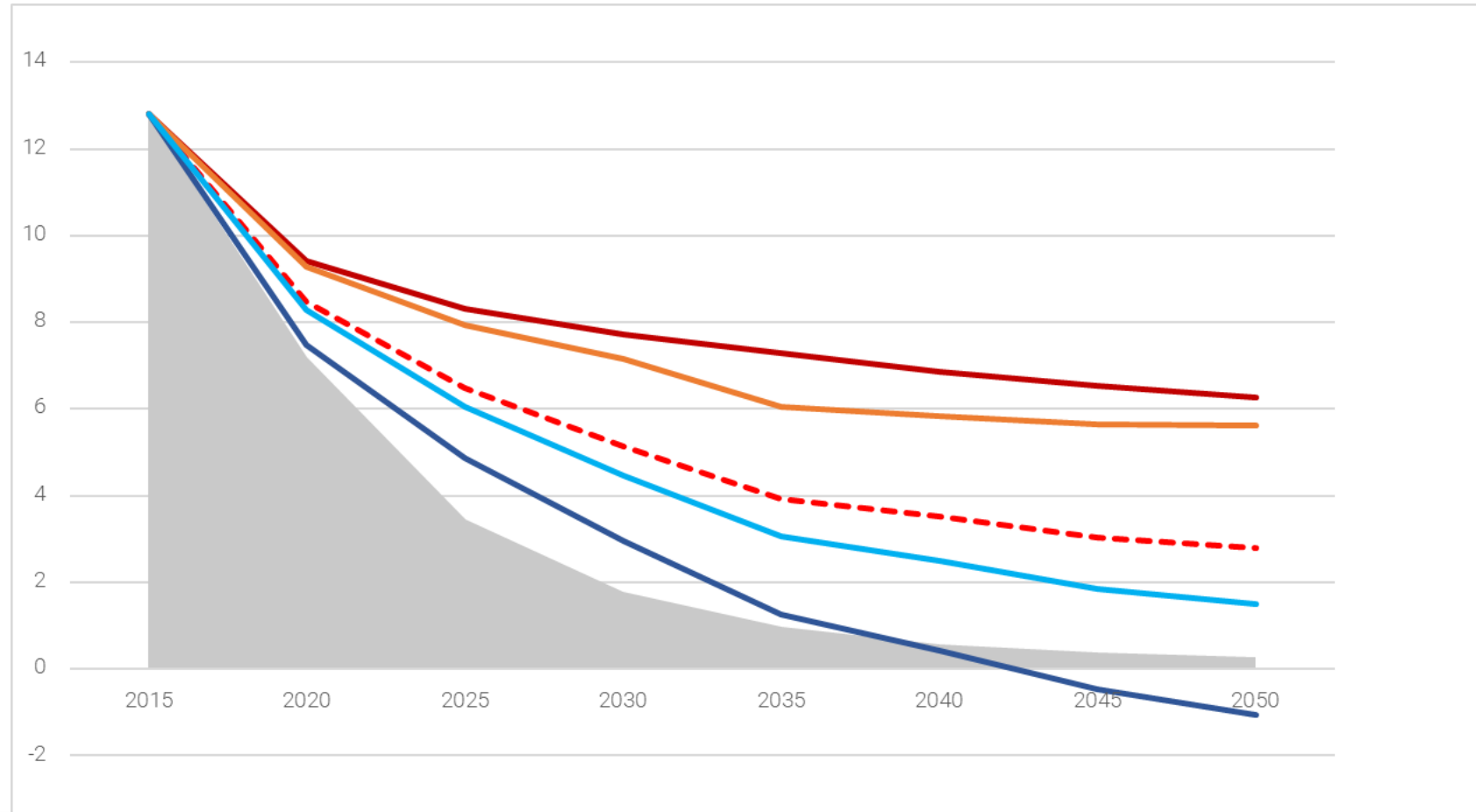


Key findings

- Cumulative impact of CO2 is critical
- Date of 'neutrality' less relevant
- Speed of reductions is key

Tyndall° Centre
for Climate Change Research

Result



What is behind the lines?

Buildings



Transport



Energy Supply



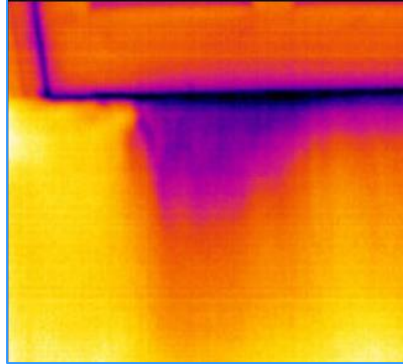
Waste & Industry



What is behind the lines?

Domestic buildings

Heat demand



Heat supply



Retrofit of existing stock

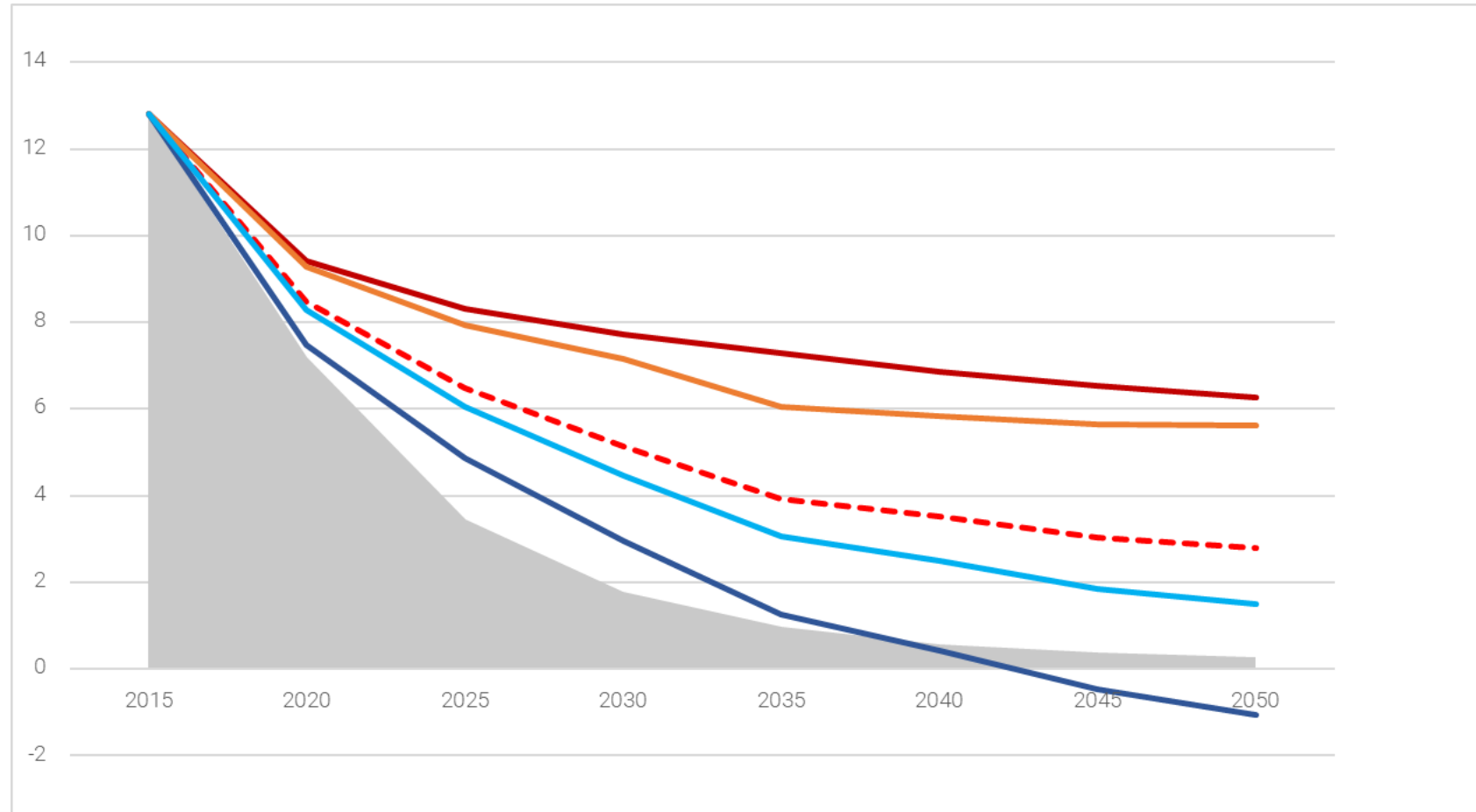


Lighting & appliance efficiency



All new build to PassivHaus Standard

Result



So what?

- “All models are wrong - but some are useful”!
- ‘Evidencing’ the scale and speed of action required
- Informing the vision for a low carbon city
- Policy or organisational actions can then be aligned

What next for retrofit?

- Still clear challenges in implementation
 - Skills
 - Finance
 - Tenant support
- Councils acting as a stimulus for action
 - Facilitating challenge groups
 - Strategy alignment of registered providers/social landlords
- Models & engagement tool development
 - SCATTER v2 released and stock modelling tools are aligning

Finally....



ukpassivhaus conference 2019



Thank you...



matt.rooney@anthesisgroup.com

#UKPHC19

app.sli.do

