

# Wraptite®

THE SELF-ADHERING AIRTIGHT AND VAPOUR PERMEABLE MEMBRANE



**Wraptite®**  
Airtightness simplified

**Proctor**  
Group







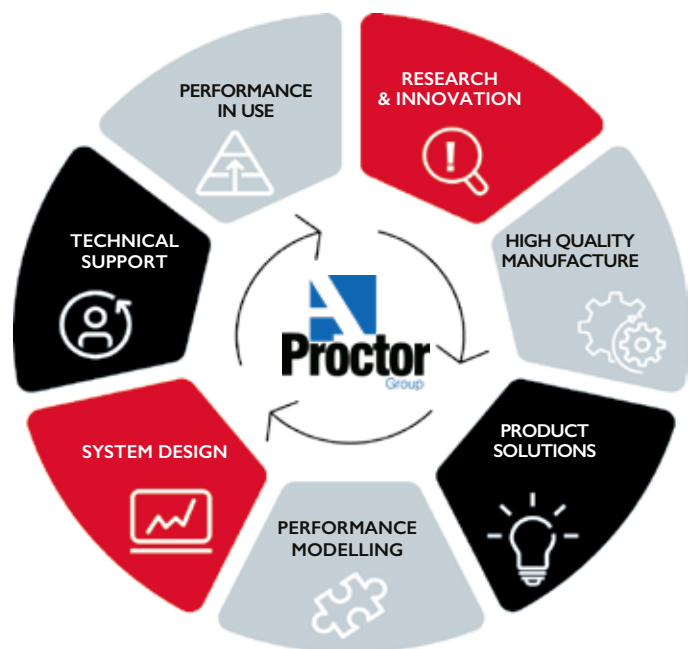
# A. Proctor Group

Experts in membrane systems

The A. Proctor Group has, for 50 years, been serving the construction industry with an extensive portfolio of trusted solutions in thermal, acoustic and membrane products. Already a trusted brand with architects, developers and contractors, the A. Proctor Group product portfolio includes Proctor Air®, the high quality, air and vapour permeable pitched roof underlay, synonymous with the highest performing roofing solutions, and Wraptite, an external air barrier to solving the problem of reliably achieving airtightness in buildings.

## Total Solution Capabilities

From concept to completion



Our products are backed up by a dedicated team of technical experts, able to assist at every project stage from pre-planning to on site. We offer CAD detail reviews, installation guidance, condensation risk analysis, WUFI calculations, U-Value calculations, ground gas system designs, telephone support & more. Our products also have a range of BIM Objects & Performance Specifications.

## Contents

### Wraptite

#### Designing for Airtightness in Buildings

Pages 4-6

- Air Permeability & Airtightness
- Air Leakage Control Strategies
- Benefits of Airtight Buildings
- Air Leakage Testing

#### Wraptite

Pages 7-11

- Airtightness Solutions
- Fire Safety Tests
- Wraptite for Walls
- Wraptite for Roofs
- Wraptite UV

#### Wraptite Accessories

Pages 13-16

- Wraptite Liquid Flashing
- Wraptite Detailing Tape
- Wraptite Floor Zone
- Wraptite Corners

#### Product Application Details

Pages 17-18

- Floor Junction
- Pipe Seal
- Horizontal over Sheathing
- Rigid Insulation
- Expansion Joint
- Draughtproofing
- Vertical over Sheathing
- Window Flashing

#### Technical Data

Page 19-22

- Physical Properties
- Technical Support

#### Case Studies

Page 23

- St Dunstan's College, London

# Airtightness

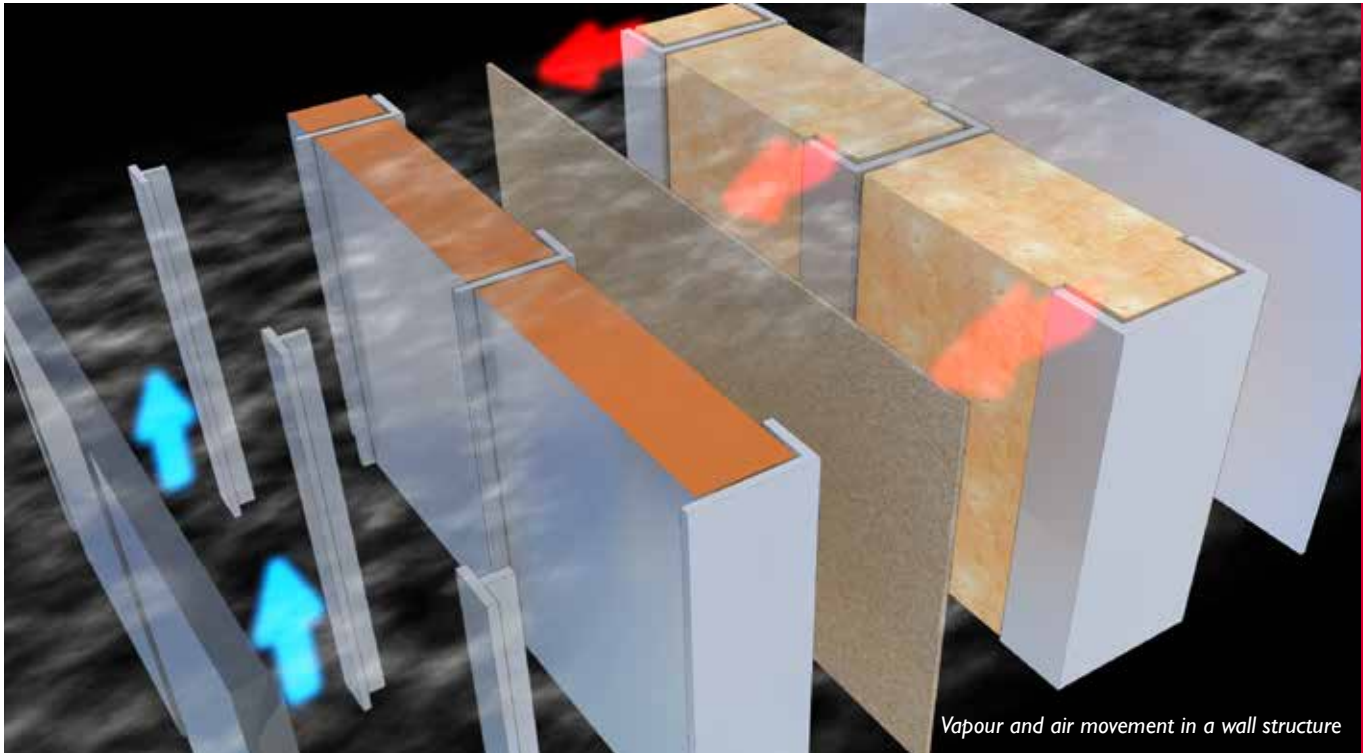


## **Air Permeability & Airtightness**

Air movement is important in the building envelope, both infiltration and exfiltration. We need to control interior conditioned air escaping (whether heated or cooled) and exterior air infiltrating as it puts more pressure on heating or cooling mechanisms internally.

Airtight membranes are an obvious choice in this area whether vapour open/closed or variable.

# Airtightness - Designing for airtightness in buildings



Vapour and air movement in a wall structure

Wraprite

## Air permeability & airtightness

Air movement is important in the building envelope, both infiltration and exfiltration. We need to control interior conditioned air escaping (whether heated or cooled) and exterior air infiltrating as it puts more pressure on heating or cooling mechanisms internally. Airtight membranes are an obvious choice in this area whether vapour open/closed or variable.

## Air Leakage Control Strategies

As Building Regulations have imposed more stringent energy performance criteria on the building envelope, improvements have often been driven through higher standards of insulation for roofs, walls, windows and floors. In the drive for higher standards, the significance of localised areas of reduced insulation or thermal bridging leading to air leakage has become even more crucial.

Air leakage through cracks, gaps, holes and improperly sealed elements, such as doors and windows, can cause an unnecessary reduction in the performance of even thermally insulated envelopes, in some cases reducing their

effectiveness by up to 70%. As thermal insulation requirements increase, this reduction in performance is becoming a critical issue; a consensus has emerged in the industry that, discrepancies between 'as-built' and 'as designed' performance are largely attributable to uncontrolled air leakage. Architects and developers are increasingly turning to air barrier membranes as an essential part of the design process in achieving the most effective means of controlling and reducing air leaks.

## Benefits of air-tight buildings

- More thermally efficient
- Reduce energy costs
- Lower CO<sub>2</sub> emissions
- Reduce interstitial condensation
- Efficient performance of HVAC
- Healthy environment for occupants

# Designing for Airtightness in Buildings

## Air Leakage Testing

A practical test of the extent of air leakage through a buildings fabric is an important part of ensuring “as built” performance come as close as possible to the design performance targets. Such testing also allows contractors to identify air leakage paths within the building, allowing them to take appropriate remedial action if the design targets are not met.

The methods governing such testing are laid out in EN13829, and are based around achieving a pressure differential between the inside of the building and the outside. The pressure differential is achieved by replacing the door with a large powered fan, and pumping air in (or out) to reach the test pressure of 50 Pascals. The volume of additional air that must be provided to maintain this pressure is then measured. The resulting figure, along with the buildings floor area is then used to arrive at the final air leakage result, which is expressed as cubic metres of air input required ( $\text{m}^3$ ) per hour per square metre of floor area ( $\text{m}^2$ ) to maintain a pressure differential of 50 Pascals, and is usually written as  $\text{m}^3/(\text{h} \cdot \text{m}^2)$  @ 50Pa.



Part L in England, Wales and the Republic of Ireland requires a value no greater than  $5 \text{ m}^3/(\text{h} \cdot \text{m}^2)$  @ 50Pa to demonstrate compliance.

In Scotland (Section 5) this is  $7 \text{ m}^3/(\text{h} \cdot \text{m}^2)$  @ 50Pa and in Northern Ireland (Part L) this is  $8 \text{ m}^3/(\text{h} \cdot \text{m}^2)$  @ 50Pa.

In practice, design values used are often lower than required by building regulation, making verification of compliance all the more important.



See [www.proctorgroup.com](http://www.proctorgroup.com) for Wraptite Warranty Application form.





BRIDGE STREET  
WEST



# Wraptite – vapour permeable air barrier

## Wraptite – a proven solution for airtightness

By combining vapour permeability and airtightness in one, self-adhering membrane, Wraptite offers a fast and effective solution to unplanned air leakage and its detrimental effects on energy performance. With BBA certification for a wide range of wall and roof constructions and compatibility with multiple substrates, this high-performance air barrier solution can be employed on projects from domestic scale timber frame to large steel framed high rise and everything in between.



With an Sd-value of 0.039m, Wraptite's high vapour permeability means any construction moisture can dry out rapidly, reducing the likelihood of mould, mildew, and condensation related damage such as timber rot and distortion or metal corrosion. This ensures the building fabric remains as healthy as the indoor environment. Vapour permeability also allows flexibility in the placement of the air barrier, meaning it can be moved outwards in the construction without risking trapping moisture. This minimises the potential for damage from following trades, in turn allowing design air leakage rates to be reduced with increased confidence pressure test targets will be met.







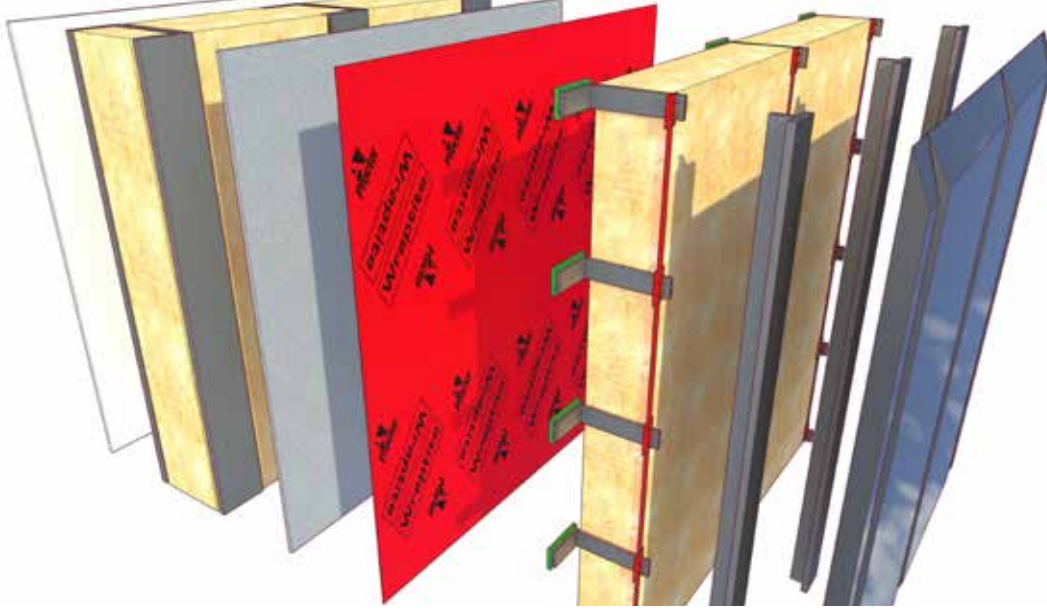
## Wraptite – fire safety tests

Wraptite has completed the latest fire tests applicable to building products with a Class B certification.

Wraptite was extensively tested by an independent testing authority and achieved the highest classification for a polypropylene membrane of its type. The product was subjected to two separate tests: BS EN ISO 11925-2:2010 Ignitability of Building Products Subjected to Direct Impingement of Flame – Part 2 Single-flame source test, and to BS EN 13823:2010 Building Products Excluding Floorings Exposed to the Thermal Attack by a Single Burning Item. Following the test results the samples were classified according to BS EN 13501:2007+A1:2009. Fire classification of Construction Products and Building Elements: Part 1: Classification using Test Data from Reaction to Fire Tests.

BS EN 13823:2010 evaluates the performance of products in relation to heat & smoke production, lateral flame spread and the presence of flaming droplets or particles. Under these test conditions Wraptite achieves a Class B-s1-d0 rating, the highest possible for a polypropylene membrane. This classification gives specifiers absolute confidence in the membranes performance in the event of fire.





## Applications

- SIPs panels
- Steel and timber framed constructions
- Façade systems
- Cassette Floor construction
- Unventilated warm roofs
- Exterior Gypsum Sheathing
- Aluminium (painted or mill finish)
- OSB
- Rigid insulation
- Cast-in-place concrete
- Rigid vinyl
- Pre-painted steel
- Galvanized metal
- Precast concrete
- Steel
- Concrete block
- Plywood

# WRAPTITE® FOR WALLS

The self-adhered nature of Wraptite allows for a simple and efficient installation process, minimising the use of additional sealants and tapes, and requiring no specialist contractors to achieve the required results. This one-step solution provides both a strong air barrier layer and effective secondary weather protection in one installation process, achieving a wind and watertight envelope more quickly than using traditional methods.



## Key Benefits

- Self adhered
- Airtight yet vapour permeable
- BBA Certificate No. 15/5274
- Passive House Institute - Certified component
- Tough 3-Layer Laminate resists punctures and tears
- Simple to install
- Wide service temperature range
- Can be left exposed for up to 90 days (North America) or 120 days (UK) during construction\*
- Free from Volatile Organic Compounds

*\*Please contact the A. Proctor Group's technical department for advice on specific geographical locations.*



# WRAPTITE® FOR ROOFS

Where a full wall and roof airtight envelope is required Wraptite can be used in both applications. The self-adhered backing not only ensures an airtight seal but resistance at laps against water penetration, dust, air infiltration and wind resistance making it an ideal choice for this application.

It fully bonds to all standard substrates, with no primer required, suppressing air leakage around joints, openings and penetrations. It is also suitable for permanent airtight sealing of membrane overlaps and for taping insulation joints. Wraptite Tape's high vapour permeability allows damp sheathing to dry quickly and moisture vapour to escape. This ensures a healthy indoor air quality and reduces the likelihood of mould, mildew, condensation, timber distortion and metal corrosion. Wraptite Tape contains no VOC's.



## Key Benefits

- Self adhered
- Airtight yet vapour permeable
- No ventilation required
- For use in all wind zones
- No maintenance required
- Class B-s1,d0 in accordance with BS EN 13501 1:2007<sup>1</sup>
- BBA Certificate No. 15/5274
- Passive House Institute - Certified component
- Tough 3-Layer Laminate resists punctures and tears
- Simple to install
- Wide service temperature range
- Can be left exposed for up to 90 days (North America) or 120 days (UK) during construction<sup>2</sup>
- Free from Volatile Organic Compounds

<sup>1</sup>tested over 12mm calcium silicate board / fibre cement board as per BS EN 13238:2010.

<sup>2</sup>Please contact the A. Proctor Group's technical department for advice on specific geographical locations.

Wraptite UV



## WRAPTITE® UV

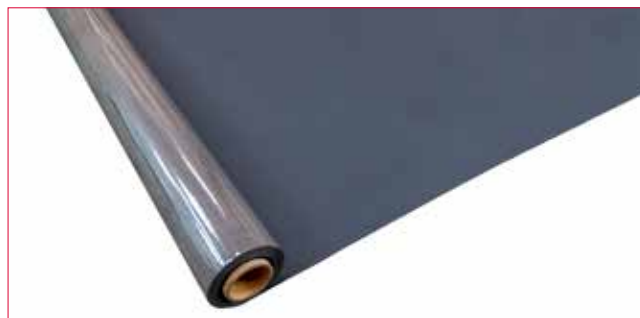
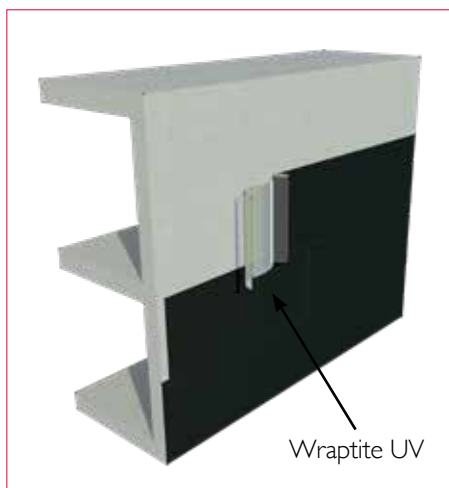
Wraptite UV is a Class B-s2,d0 membrane that combines the ideal properties of vapour permeability and air tightness in one self-adhering product, which is specifically designed for use behind open jointed cladding.

Wraptite UV has W1 water resistance and UV resistance to provide a “shadow” appearance within open rainscreen façades. Manufactured from polyester and a functional coating, with a proprietary acrylic moisture vapour permeable adhesive and silicone-coated PET release liner.

Wraptite UV bonds (no mechanical attachment) to multiple substrates for air tightness and ease of installation, negating the requirement for a primer, sealants or tapes. Adhesive curing time is approximately 6hrs depending on environmental conditions.

Wraptite UV prevents lateral air movement enhancing the buildings thermal performance. With a rating of Sd 0.06m it provides a high vapour permeability in a commercial quality, self-adhered, airtight breathable membrane.

To protect the membrane from mechanical damage, the joint openings in the façade covering have to be less than 40% of the area, and maximum 50mm wide.



### Key Benefits

- Airtight yet vapour permeable
- No primer required
- Tough facer laminate resists punctures and tears during construction
- Simple to install
- Manufactured rolled goods ensure consistent properties and performance
- Wide service temperature range
- Can be left exposed for up to 9 months (UK climate)



# WRAPTITE® LIQUID FLASHING

Wraptite Liquid Flashing is a high-quality, gunable, elastomeric, polyether, liquid applied flashing and detailing membrane. It bonds to most construction materials, such as aluminium, brick, concrete, wood, vinyl, and exterior sheathing boards. Wraptite Liquid Flashing is compatible with the entire line of A. Proctor Group's vapour permeable products for joint detailing in exterior sheathing panels.

Wraptite Liquid Flashing is for use with A. Proctor Group's range of vapour permeable membranes. This liquid applied flashing membrane is ideal for use in complex details. It can also be used to protect the leading edge of the Wraptite membrane or tape from water penetration if the edge cannot be protected by overlapping in a shingle fashion.



## Applications

- Exterior Gypsum Sheathing
- Aluminium (painted or mill finish)
- OSB
- Rigid insulation
- Cast-in-place concrete
- Rigid vinyl
- Pre-painted steel
- Galvanized metal
- Precast concrete
- Steel
- Concrete block
- Plywood



## Key Benefits

- Continuous seal and system approach.
- Can be applied in damp conditions.
- Does not peel back when left exposed.
- Does not create build up in rough openings.
- Non-sag.
- 100% solvent free.
- Non-shrinking.
- Bonds to most construction materials.
- Simple to apply and spread.
- Does not harm foam insulation.



## Applications

- Exterior Gypsum Sheathing
- Aluminium (painted or mill finish)
- OSB
- Rigid insulation
- Cast-in-place concrete
- Rigid vinyl
- Pre-painted steel
- Galvanized metal
- Precast concrete
- Steel
- Concrete block
- Plywood

# WRAPTITE® DETAILING TAPE

Ideal for stopping unnecessary air leakage around openings and overlaps, Wraptite Tape is an airtight, tear resistant tape with high vapour permeability for internal and external applications.

It fully bonds to all standard substrates, suppressing air leakage around joints, openings and penetrations. It is also suitable for permanent airtight sealing of membrane overlaps.

## Composition

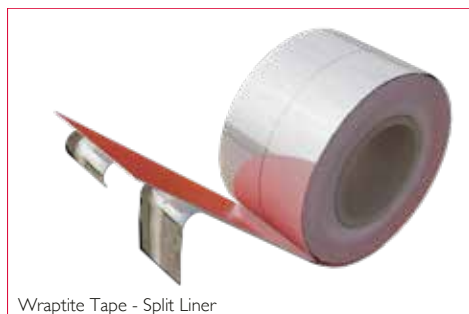
Wraptite Tape consists of a triple layer polypropylene micro-porous film laminate, with a proprietary acrylic moisture vapour permeable adhesive and silicone-coated PET release liner.

## Drying Capacity

Wraptite Tape's high vapour permeability, with an Sd rating of 0.039m, allows damp sheathing to dry quickly and moisture vapour to escape. This ensures a healthy indoor environment and reduces the likelihood of mould, mildew, condensation, timber distortion and metal corrosion.

# WRAPTITE TAPE - SPLIT LINER

Whilst Wraptite Tape is suitable for most applications there are some details, such as panel joints, cassette edges, complex detailing, where the benefit of a split liner is advantageous. The split liner allows one part of the Wraptite Tape to be adhered to the substrate, prior to the second portion, and can allow panels to be sealed on site in a simple process. It can also be used for complex detailing where you need to protect part of the tape from bonding to areas until its needed. The split can be accommodated at any position across the reverse of the tape allowing flexibility of taped lap.



Wraptite Tape - Split Liner

Please note: Colour may vary for Wraptite Tape and Wraptite Tape Split Liner

## Key Benefits - Tape and Split Liner

- Vapour permeable tape used to protect exposed joints in insulation
- Airtight
- Simple to use when detailing joints
- Ultimate airtightness accessory
- Can seal joints in mechanically fastened air barrier

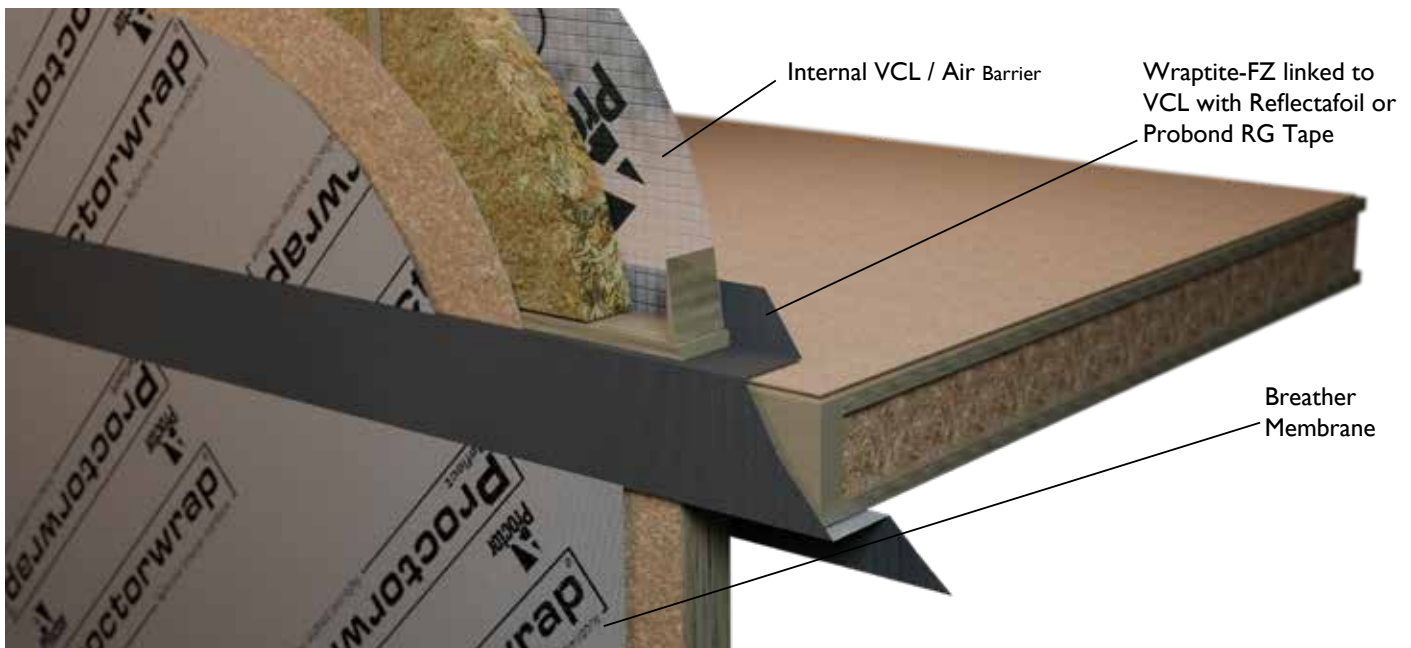
## Key Benefits - Wraptite Split Liner only

- Easier removal of backing
- Location of split can be bespoke
- Aids accurate detailing
- Maintains adhered edge until installation phase
- Easier installation non-linear application ie pipe or window flashing



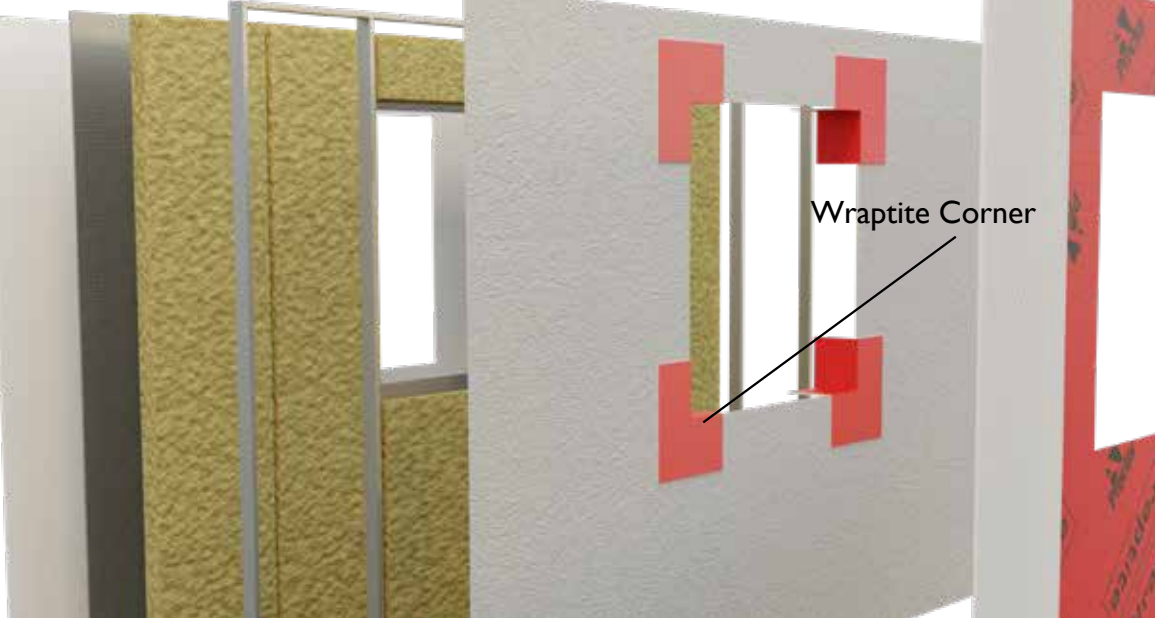
# WRAPTITE® FLOOR ZONE

Wraptite-FZ is a vapour permeable air barrier membrane for use at floor junctions. It is flexible and lightweight, and offers temporary protection against wind driven rain, snow and dust and is supplied in 750mm roll widths for easy site handling. Wraptite-FZ conforms to the Construction Products Directive and is manufactured under control of an ISO9001 quality management system.



## Key Benefits

- Provides continuity of internally applied air barriers around floor zone junctions in new build developments
- Allows temporary protection to the floor zone during construction
- Reduces risk of condensation within the floor cassette



## Applications

- Exterior Gypsum Sheathing
- Aluminium (painted or mill finish)
- OSB
- Rigid insulation
- Cast-in-place concrete
- Rigid vinyl
- Pre-painted steel
- Galvanized metal
- Precast concrete
- Steel
- Concrete block
- Plywood

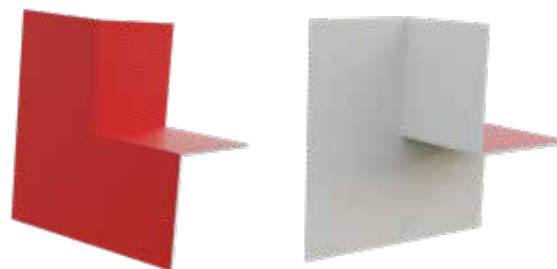
# WRAPTITE® CORNERS

Wraptite Preformed Airtight Corners have been developed for the difficult areas around doors and windows where a well maintained barrier continuity is difficult and time consuming. Wraptite corners' simple design and installation process makes sealing openings against air leakage simple, just peel off the release liner, stick the corners in place, then install the Wraptite membrane as normal. This helps achieve the best possible results in the shortest possible time.

Once installed, the corner sections provide the same vapour permeable air barrier performance as the Wraptite membrane itself, ensuring air leakage and water ingress are minimised without trapping construction moisture or causing condensation.



Please note: Colour may vary



## Key Benefits

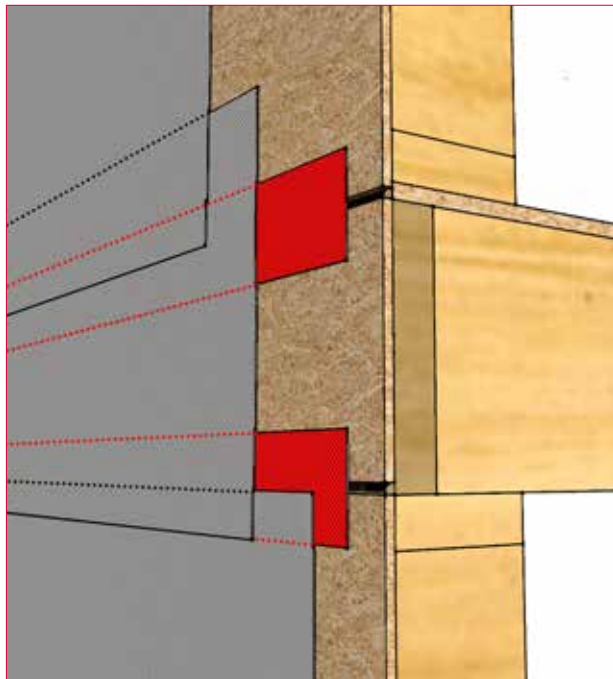
- Airtight, yet vapour permeable
- Self-adhering
- Flexibility, facilitating ease of application and detailing
- Wide operating temperature range (-40°C to +100°C)

Wraptite accessories are available for both Wraptite and Wraptite UV applications.

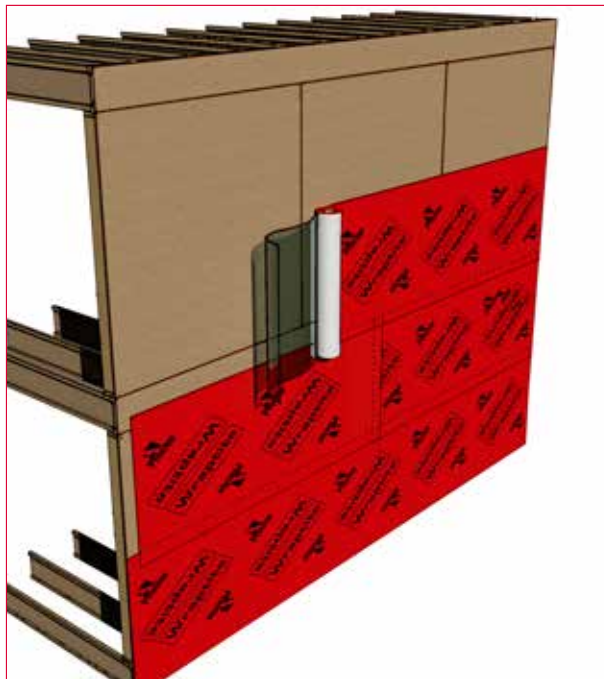


## PRODUCT APPLICATION DETAILS

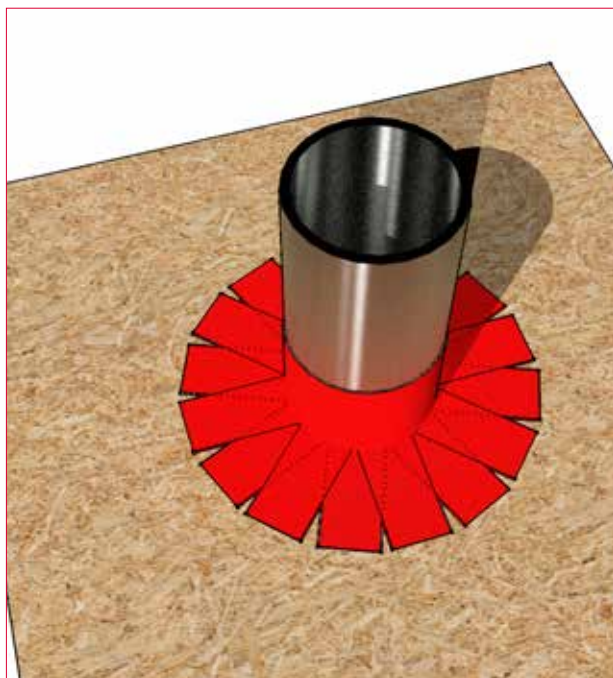
Penetrations in sheet material such as pipes, ducts and electrical work require to be sealed to stop air leakage from the structure.



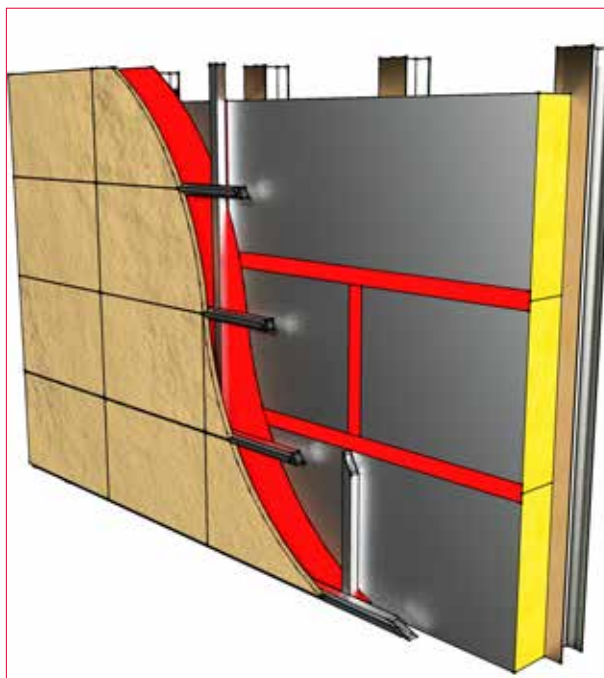
Floor junction on installation



Horizontal over sheathing



Pipe seal



Seal joins of rigid insulation with Wraptite tape / or use Wraptite

Customers must complete their own assessment of the product for its intended use. For any new applications other than those shown, please liaise with our technical department as regards suitability on 01250 872261.

# PRODUCT APPLICATION DETAILS

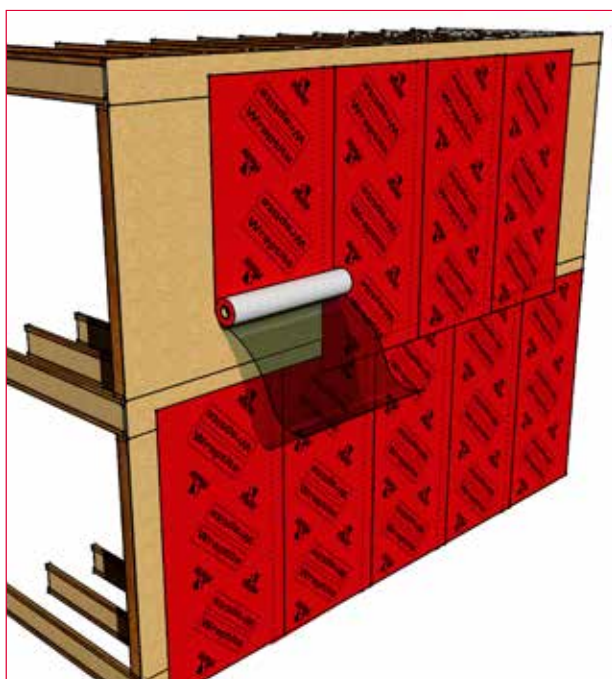
Detailing with Wraptite Tape is quick and simple, providing an ideal solution to what can be an expensive problem.



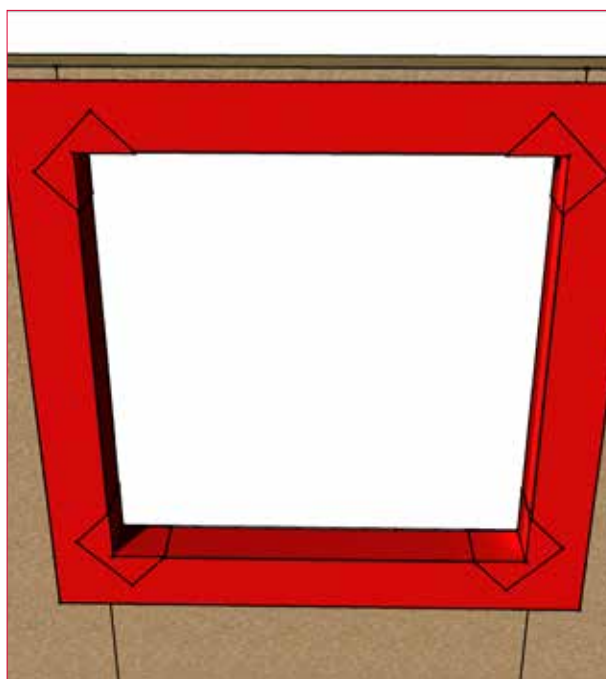
Expansion Joint



Draughtproofing



Vertical over sheathing



Window Flashing

Customers must complete their own assessment of the product for its intended use. For any new applications other than those shown, please liaise with our technical department as regards suitability on 01250 872261.



# PHYSICAL PROPERTIES

## Wraptite

| PROPERTY                         | TEST/STANDARD                    | RESULT   |
|----------------------------------|----------------------------------|--|
| Roll Length                      | -                                | 50m  |
| Full Roll Width<br>Tape Widths   | -                                | 1.5m<br>75mm, 100mm, 150mm, 300mm (other sizes available on request) |
| Roll weight                      |                                  | 24kg   |
| Nominal Thickness                | Calibrated Deadweight Micrometer | 0.65mm   |
| Basis Weight                     | Electronic Weigh Scale           | 292 g/m <sup>2</sup>   |
| Installation Temperature         | -                                | -10°C to +60°C   |
| Service Temperature              | -                                | -40°C to +100°C  |
| Water Penetration                | EN 1928 : 2000 Method A          | Class WI (before ageing)<br>Class WI (after ageing)                  |
| Resistance to Penetration of Air | EN 12114                         | 0.01 m <sup>3</sup> /m <sup>2</sup> .h.50 Pa                         |
| Water Vapour Permeability        | EN ISO 12572 (C)                 | Sd 0.039m  |
| Water Vapour Transmission        | BS 3177:1959                     | 893 g/m <sup>2</sup> .24hr   |
| Peel Adhesion                    | EN 1939                          | 5.01 N/10mm  |
| Tensile Strength                 | EN 12311-1                       | Mean MD 417N      Mean XD 252N                                       |
| Tear Resistance                  | EN 12310-1                       | Mean MD 412N      Mean XD 286N                                       |
| Dimensional Stability            | EN 1107-2                        | MD +0.3%      XD +0.1%   |
| Reaction to Fire                 | EN 11925-2<br>BS EN 13501-1      | Class B-s1,d0 <sup>1,2</sup>   |
| Flexibility at Low Temperature   | EN 1109                          | No cracks at -40°C   |

<sup>1</sup>tested over 12mm calcium silicate board / fibre cement board as per BS EN 13238:2010.

<sup>2</sup>free hanging. It is unlikely that any breathable membrane in this application, including Wraptite would be free hanging due to either the self-adhered backing in Wraptite or the tapes used in installing non-self-adhered membranes. This test result is included to allow product specifiers to objectively compare Wraptite to other membranes tested using this method, and does not constitute a recommendation that Wraptite is installed free-hanging. Clients are urged to discuss their individual project with the Technical Department to ensure the suitability for any given project taking into account substrate, building height and boundary proximity.

All tests carried out to EN 13859-2 standard.

## Wraptite UV

| PROPERTY                       |                               | TEST/STANDARD                    | RESULT  |                              |
|--------------------------------|-------------------------------|----------------------------------|---|------------------------------|
| Roll Length                    |                               |                                  | 50m   |                              |
| Roll Width                     |                               |                                  | 1.5m  |                              |
| Nominal thickness              |                               | Calibrated Deadweight Micrometer | 0.38mm  |                              |
| Basis Weight                   |                               | Electronic Weigh Scale           | 392 g/m <sup>2</sup> (incl. liner)                  |                              |
| Installation temperature       |                               |                                  | -10° to +60°C                                       |                              |
| Service temperature            |                               |                                  | -40° to +100°C                                      |                              |
| Water penetration              | Before ageing<br>After ageing | EN 1928:2000 Method A            | Class W1 (before ageing)<br>Class W1 (after ageing) |                              |
| Water Vapour Permeability      |                               | EN ISO 12572 (C)                 | Sd 0.06m  |                              |
| Tensile strength               | Before ageing<br>After ageing | EN 12311-1                       | MD 490N/50mm<br>MD 480N/50mm                        | CD 330N/50mm<br>CD 310N/50mm |
| Tear resistance                |                               | EN 12310-1                       | MD 327.38N<br>CD 453.38N                            |                              |
| Dimensional stability          |                               | EN 1107-2                        | MD -0.32%<br>CD -0.15%                              |                              |
| Flexibility at low temperature |                               | EN 1109                          | No cracks at -40°C                                  |                              |
| Reaction to Fire               |                               | BS EN 13501-1                    | Class B-s2,d0*                                      |                              |

\*tested over 12mm calcium silicate board as per BS EN 13238:2010.



## Wraptite FZ

| PROPERTY                       | TEST / STANDARD |                               | RESULT                    |                           |
|--------------------------------|-----------------|-------------------------------|---------------------------|---------------------------|
| Roll size                      | -               |                               | 750mm x 50m<br>1m x 50m   |                           |
| Mass per unit area             | EN 1849-2       |                               | 170 g/m <sup>2</sup>      |                           |
| Reaction to fire               | EN 13501-1      |                               | Class E*                  |                           |
| Water vapour resistance Sd     | EN 12572        |                               | 0.029 m                   |                           |
| Water penetration              | EN 1928         | Before ageing<br>After ageing | Class W1<br>Class W1      |                           |
| Tensile strength               | EN 12311-1      | Before ageing<br>After ageing | MD 400N (-80N)<br>MD ≥50% | CD 260N (-50N)<br>CD ≥50% |
| Elongation                     | EN 12311-1      | Before ageing<br>After ageing | MD 80%<br>MD ≥50%         | CD 100%<br>CD ≥50%        |
| Tear resistance                | EN 12310-1      |                               | MD 190N (-50N)            | CD 190N (-50N)            |
| Flexibility at low temperature | EN 1109         |                               | No cracking at minus 60°C |                           |

\*When tested to EN 11925-2

## Wraptite LF

| PROPERTY                    | TEST / STANDARD       | RESULT                                 |
|-----------------------------|-----------------------|--|
| Chemical base               | 1-component silicone  |  |
| Colour                      | CQP001-1              | Black                                  |
| Cure mechanism              |                       | Moisture-curing                        |
| Cure type                   |                       | Neutral                                |
| Density                     | uncured               | 1.5 kg/l                               |
| Non-sag properties          | CQP061-4 / ISO 7390   | good                                   |
| Application temperature     | ambient               | 5 to 40 °C                             |
| Skin time                   | CQP019-1              | 25 minutes <sup>A</sup>                |
| Tack free time              | CQP019-3              | 120 minutes <sup>A</sup>               |
| Shore A hardness            | CQP023-1 / ISO 7619-1 | 30 <sup>B</sup>                        |
| Tensile strength            | CQP036-1 / ISO 527    | 1.0 MPa                                |
| 100 % modulus               | CQP036-1 / ISO 527    | 0.3 MPa                                |
| Elongation at break         | CQP036-1 / ISO 527    | 800 %                                  |
| Tear propagation resistance | CQP045-1 / ISO 34     | 4.0 N/mm                               |
| Service temperature         |                       | -40 to 150 °C                          |
| Shelf life                  | CQP016-1              | 600ml sausage - 12 months <sup>C</sup> |

CQP = Corporate Quality  
Procedure

<sup>A</sup>23 °C / 50 % r.h.  
<sup>B</sup>after 28 days

<sup>C</sup>storage below 25 °C

# Technical Support

Our products are backed up by a dedicated team of technical experts, able to assist at every project stage from pre-planning to on site. We offer CAD detail reviews, installation guidance, condensation risk analysis, WUFI calculations, U-Value calculations, ground gas system designs, telephone support & more. Our products also have a range of BIM Objects & Performance Specifications.



## Customer Focused

- Online Technical Advice
- Members Area / Onsite App
- WUFI & U-Value Calculations
- Condensation Risk Analysis
- CAD Design
- Site Advice
- CPD Presentations
- Accreditations
- System Design

## Expertise and know-how to support your project

### CONDENSATION RISK ANALYSIS

Condensation can significantly reduce the effectiveness of insulation, and result in damage to the building fabric. A Condensation Risk Analysis evaluates the likelihood of interstitial condensation in your roof or wall construction. These calculations are regularly required by building control to demonstrate compliance with building regulation requirements. Calculations are performed free of charge when using our products.

### BIM DATA

Available through NBS Chorus and NBS Source, specifiers can now access a full suite of digital products and technical specifications for many of our product solutions. The collaboration with NBS provides architects and designers with a comprehensive technical specification writing service. In addition, specifiers have easy access to the manufacturer's specification data, BIM objects, literature and third-party certifications.

### PRODUCT DIVISIONS

We provide a wide range of high quality solutions which meet the continuously evolving requirements of the construction industry.

#### Product divisions include:

- Condensation Control
- Acoustics Floor Solutions
- External Airtight Barriers
- Ground Gas Protection
- Thermal Solutions

#### Get in touch for more information

[www.proctorgroup.com](http://www.proctorgroup.com) | +44 (0) 1250 872261  
[contact@proctorgroup.com](mailto:contact@proctorgroup.com)



# Case Study - State-of-the-art college to benefit from superior airtightness

The superior airtightness performance qualities of the Wraptite air barrier system will enhance a new state-of-the-art development at St Dunstan's College - a co-educational independent school in Catford, London.

Contractor Willmott Dixon will deliver the new Junior School, STEM building and Sixth Form Hub at St Dunstan's.

Designed by Bond Bryan Architects, the new development will be sited adjacent to the existing historic Headmaster's House and connected by a glass atrium. Phase one includes a new junior school with specialist facilities for art, music and performance, and phase two includes the construction of the STEM Centre and Sixth Form Hub.

A vital element of the design and construction is to maximise the energy efficiency of the new buildings: Wraptite airtightness membrane, the only self-



adhering vapour permeable air barrier certified by the BBA, will form a crucial part of the solution.

The inclusion of Wraptite within the facade will ensure “as-designed” performance, narrowing the gap between as-designed and actual energy performance and reducing the likelihood of potential failures to meet required airtightness levels.





*“ I believe the success of the A. Proctor Group is down to a solid foundation of innovation backed up by an excellent, loyal and committed team, every one of them playing an important role in our continued success. Scotland provides us with a unique platform to launch our ideas, systems and products. I am fiercely proud of this heritage and our brand.”*

**Keira Proctor**

Managing Director, A. Proctor Group Ltd



[www.proctorgroup.com](http://www.proctorgroup.com) | +44 (0) 1250 872261  
[contact@proctorgroup.com](mailto:contact@proctorgroup.com)

*The contents of this literature are provided by A. Proctor Group Limited (APG) in good faith and considered to be factual and accurate at the date of publication. These do not constitute specific technical recommendations and are provided for general information purposes only. It is for the engineer, architect or other relevant professional engaged to advise on any project to assess and satisfy themselves on the suitability of APG products for their intended use on that project. Please note that information contained in this literature may be subject to change with advances in usability and experience.*